

MICHAEL TUZZO

PORTFOLIO

SELECTED WORKS

2026

MICHAEL TUZZO

# PORTFOLIO

SELECTED WORKS

2026

MICHAEL TUZZO

# PORTFOLIO

(561) 419-4111  
Tuzzomikey@gmail.com  
Boca Raton, Florida, 33486

SELECTED WORKS

2026

# CONTENTS

The Floating Garden ————— 6

Framework ————— 16

The Film Strip ————— 34

Winter Wonder Prism ————— 46

STRATA ————— 58

Curtains of Concrete ————— 78

# THE FLOATING GARDEN

The Floating Gardens explores the balance between urban living and restorative green space. Located within Opelika, Alabama, the project introduces a mid-rise housing model where nature is integrated throughout the building. The first floor activates the street with public retail and a welcoming residential lobby, while the three upper levels consist of two and three bedroom apartments, with a spacious, rooftop garden.

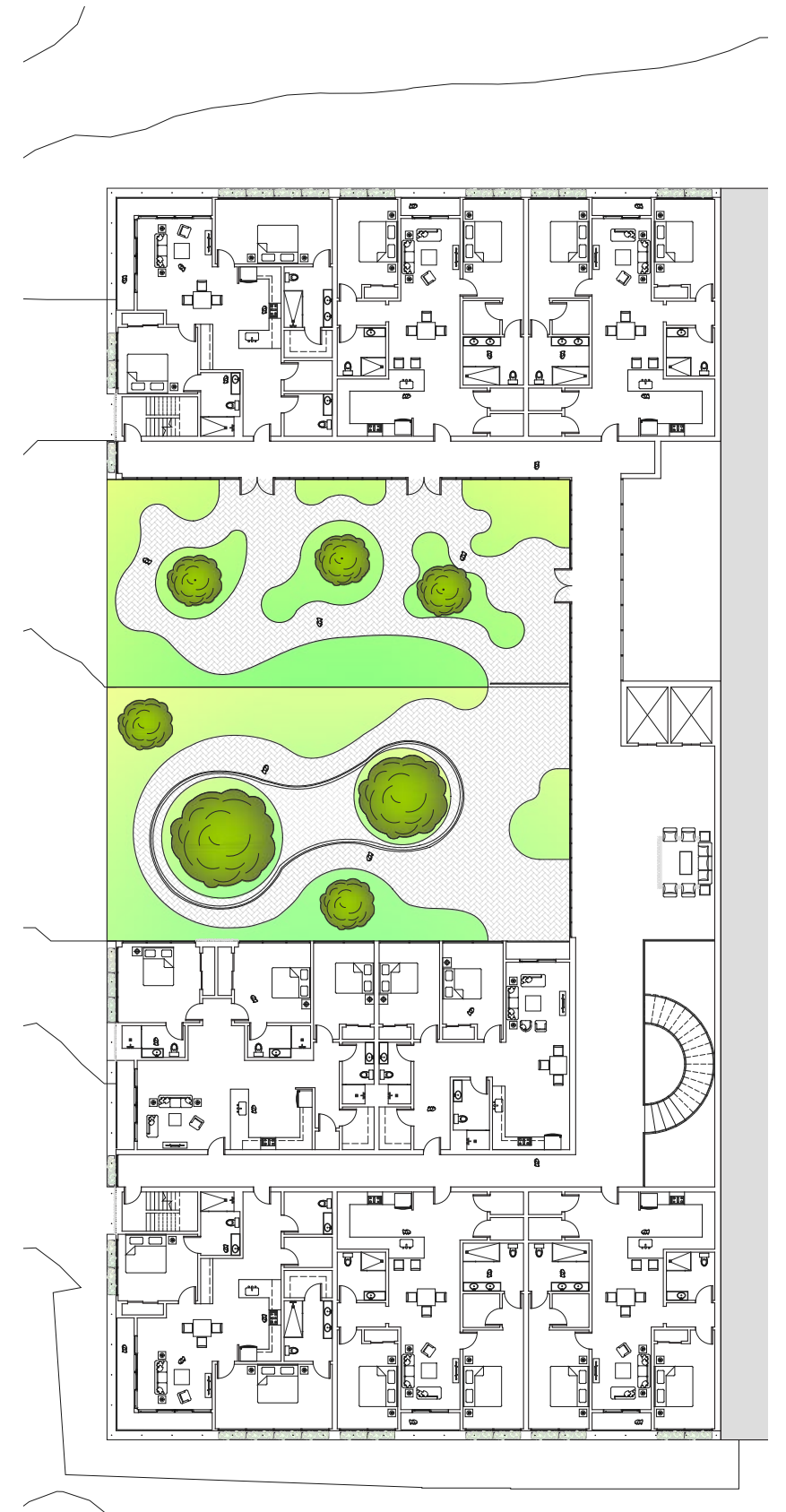
Each housing floor features a shared planted terrace, creating cascading outdoor spaces that visually and physically connect neighbors. In addition to these communal gardens, planters integrated to the slab edges support climbing greenery along tensions steel wires. Over time, a soft veil of vegetation wraps the otherwise minimal facade, providing natural shading, improved thermal performance, and constantly changing architectural expression.



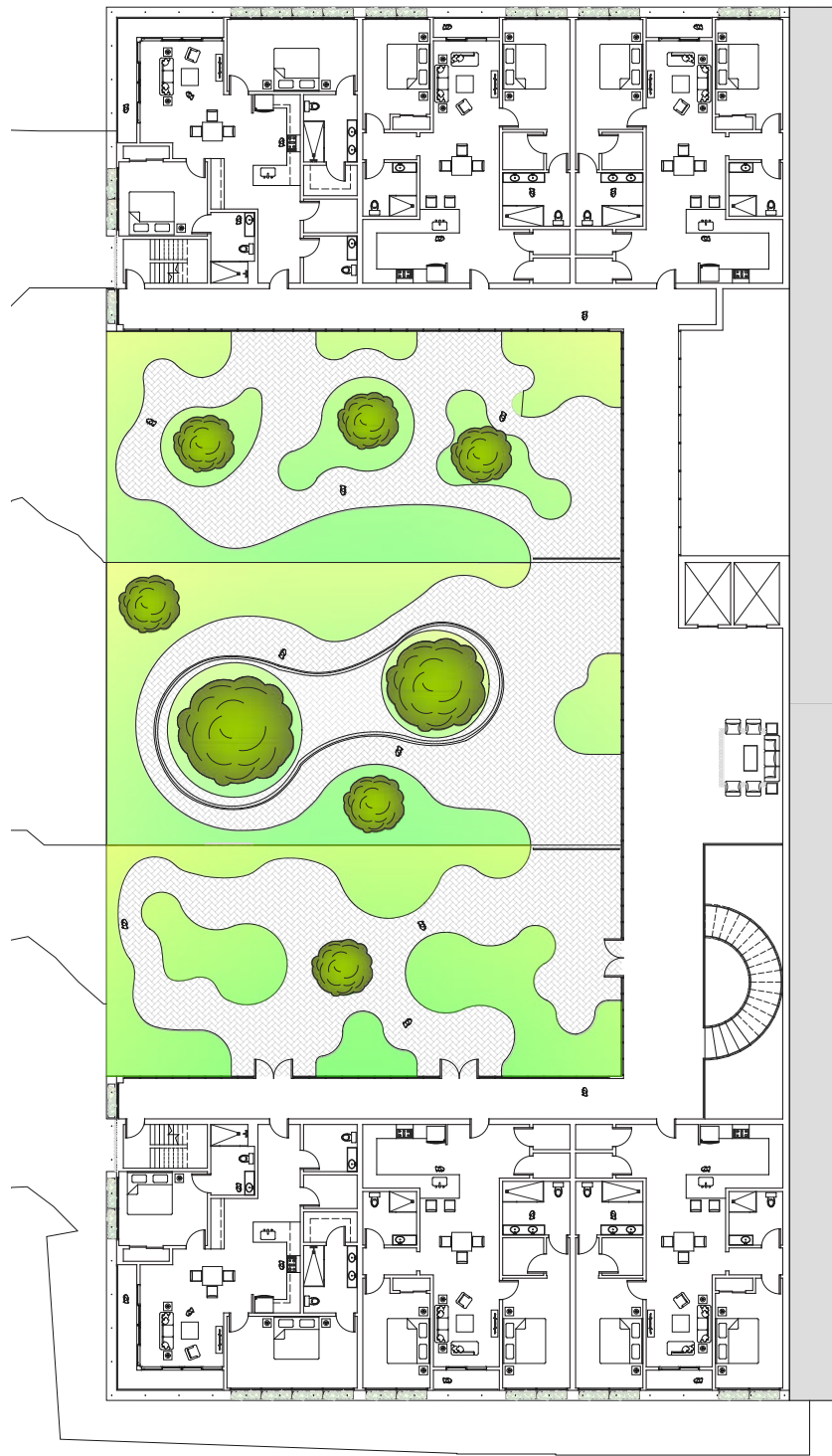
**Courtyard View** Retail spaces and lobby engage the street edge with visual connection to the second floor terrace above.



**Ground Floor Plan** Retail spaces and lobby engage the street edge, establishing a public-facing base for the residential levels above.



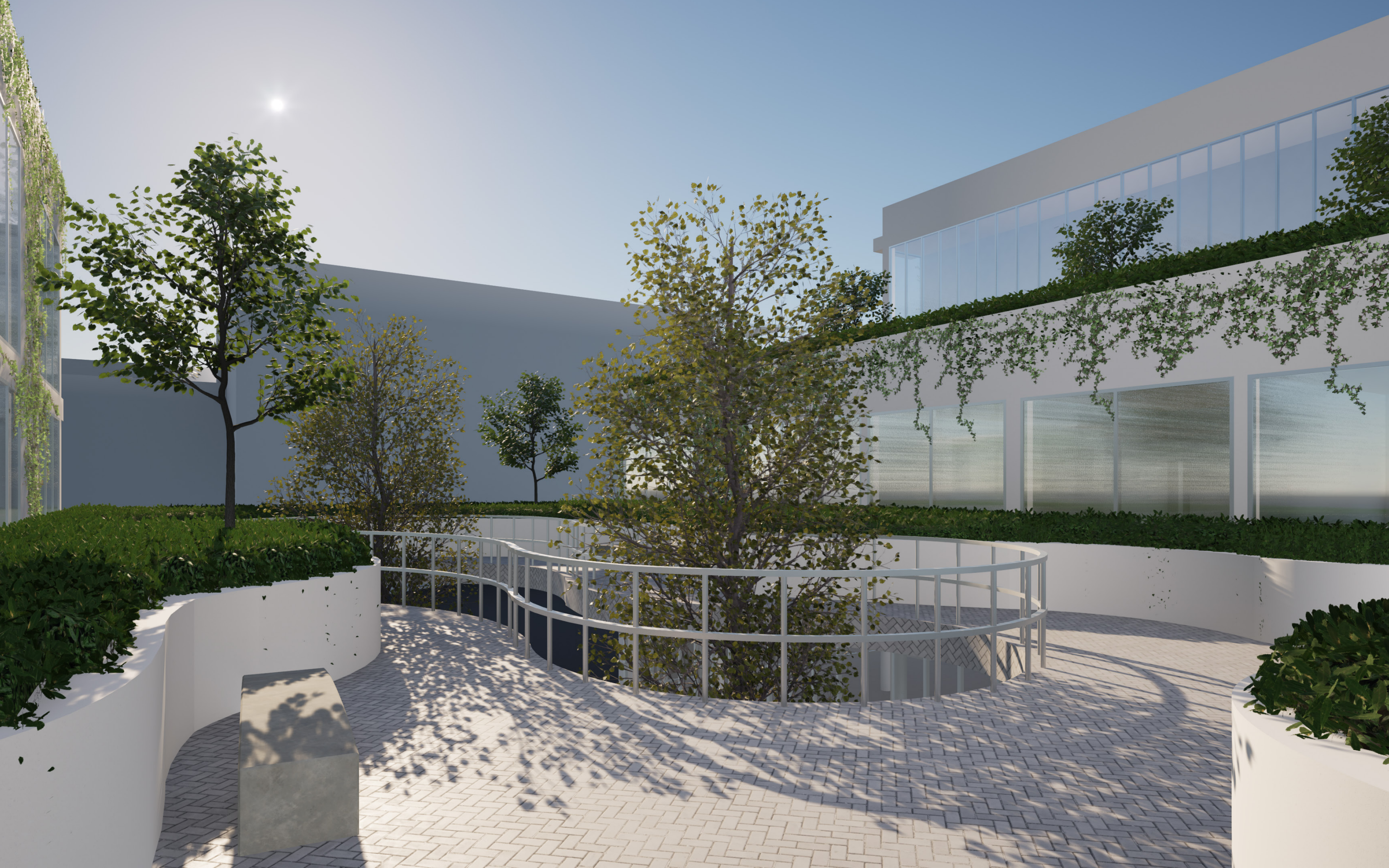
**Third Floor Plan** Apartments arranged around a shared terrace that encourages daylight, cross-breezes, and neighbor interaction.



**Fourth Floor Plan** Similar to the second and third, apartments arranged around a shared terrace that occupies previous apartment space in upper floors.



**Fifth Floor Plan** Roof top terrace that offers a spacious area for residents to move freely.





**Previous: Second Floor Terrace** fostering connection and visual community.

**Left: Third Floor Terrace** shared garden offers a place to gather, relax, and recharge.

**Right: Facade Detail** Built-in planters and vertical steel wires support climbing vegetation that gradually shades the facade.

**Below: West Elevation** Cascading green terraces visually connect floors while offering semi-private outdoor rooms for residents.



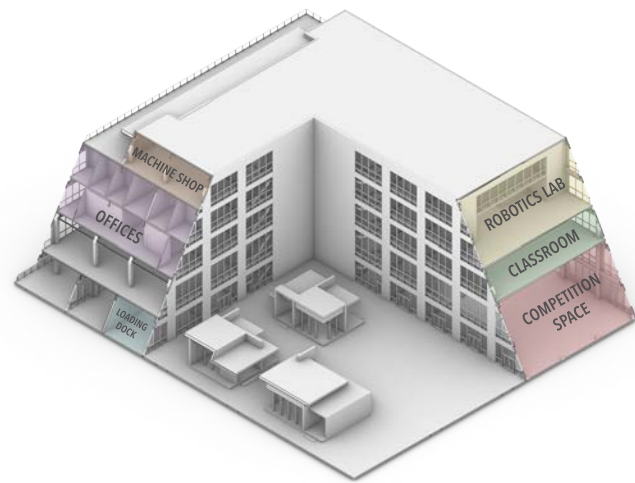
Framework is organized around a series of open-air display pavilions that sit within the L-shaped footprint of the building, each designed to showcase space-related artifacts such as spacesuits, meteor fragments, and replica spacecraft. These pavilions act as a porous threshold, drawing visitors from the exterior plazas into the heart of the building while establishing a strong visual identity rooted in exploration and discovery.

Inside, a double-loaded corridor ensures that every program space receives generous natural light, while the exterior expression is defined by modular groupings of metal panels that repeat across the facade. The first floor functions as the public anchor of the building, containing retail, a café, and a double-height competition space that extends into the courtyard when additional room is needed. Outdoor covered seating along the riverfront further connects the building to its landscape.

The second floor accommodates mechanical infrastructure but also contributes two flexible rooms with interior balconies overlooking the competition space. Academic and administrative programs occupy the upper levels: offices and classrooms on the third floor, followed by additional offices and specialized labs on the fourth. The fifth floor houses two lab spaces and a machine shop, along with a large terrace facing the river completes the experience, offering a place to gather, study, and enjoy expansive views.

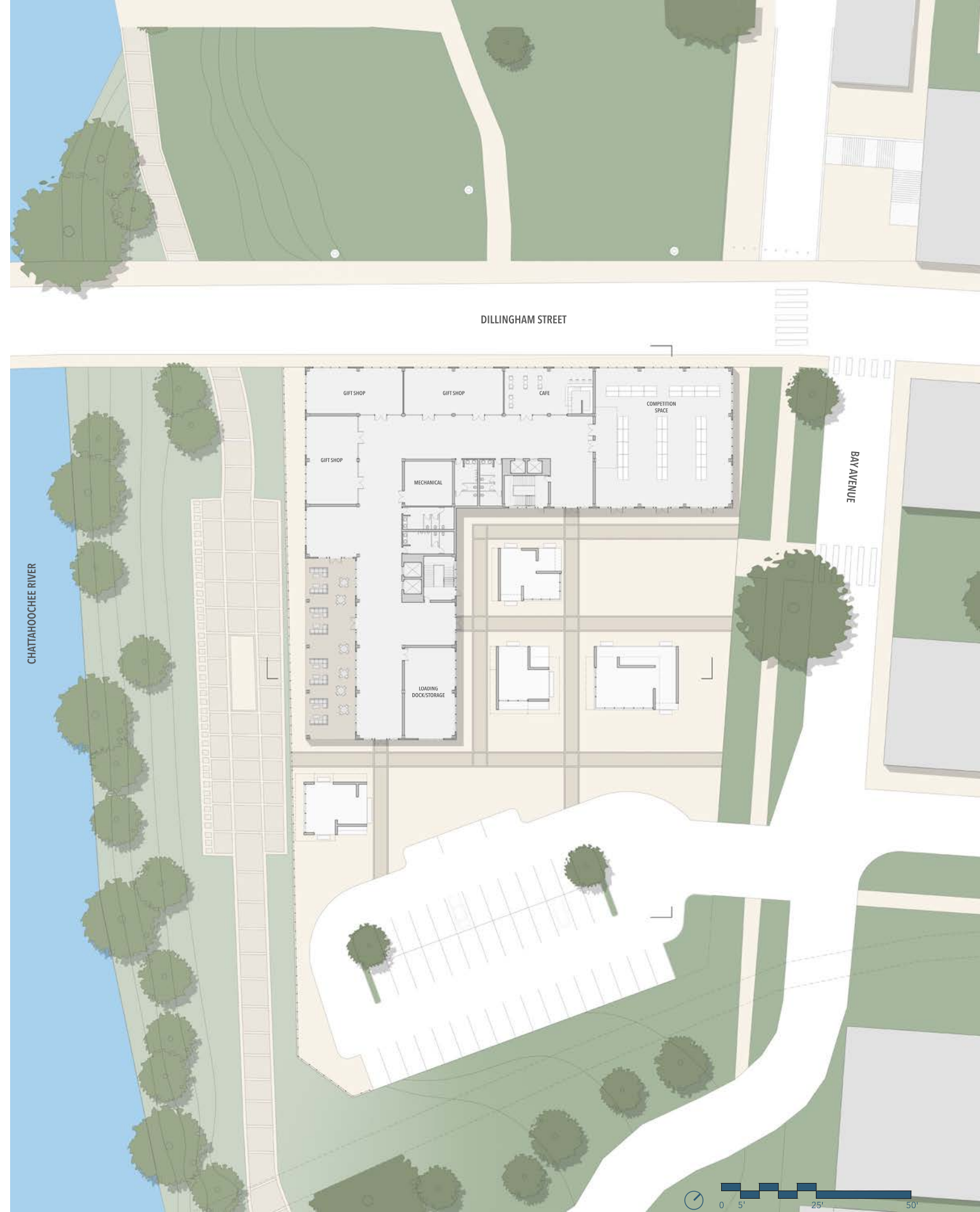


**Courtyard View** The display pavilions frame the central courtyard, contrasting the rhythmic facade.



**Program Diagram** Reveals the program through section.

**Right: Ground Floor Plan** Public level that uses the display pavilions to draw pedestrians into the main building.





**Second Floor Plan** Mechanical and flex spaces to support building operations and adaptable programming.



**Third Floor Plan** Classrooms and Offices arranged along a double-loaded corridor to ensure ample natural light.



**Fourth Floor Plan** Labs and robotics stacked vertically to create a coherent program scheme.



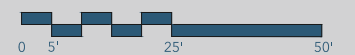
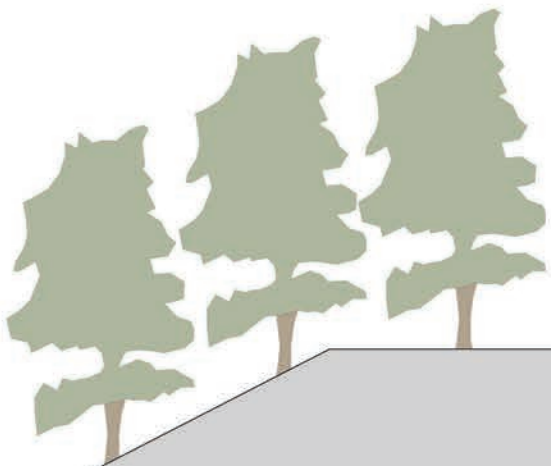
**Fifth Floor Plan** Contains two lab spaces and a machine shop, along with a large river-facing terrace.

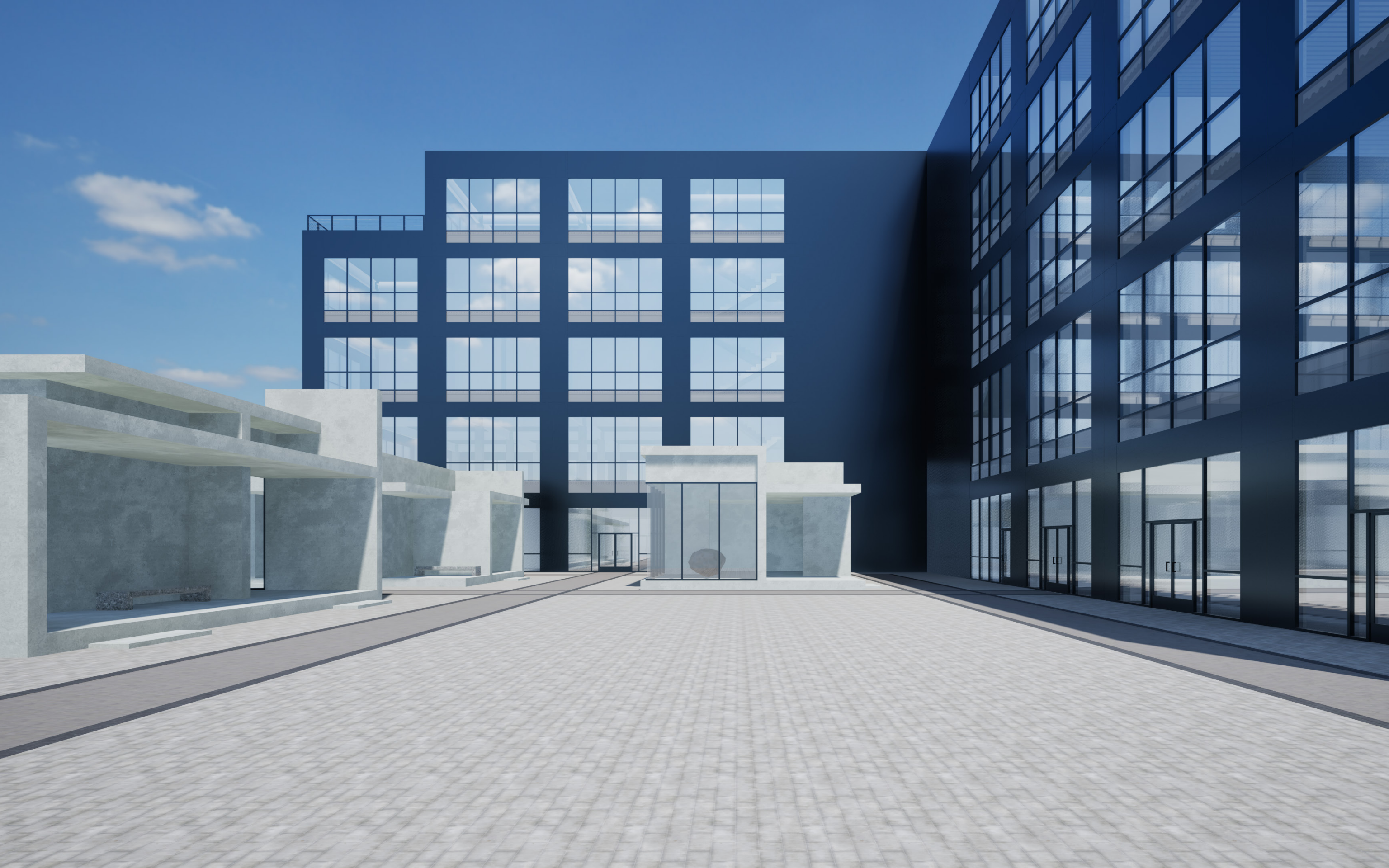


**Previous: Parking Lot View** The massing frames the display pavilions in the courtyard.

**Right: Interior Hallway View** looking out towards the riverfront.

**Below: E/W Site Section** Highlights the drastic elevation change between the riverwalk and main site.





**Previous: Courtyard View** Eastern entrance onto the site.

**Right: Robotics Lab** Double-height robotics lab on the fifth floor.

**Below: N/S Section** Reveals the alternating double-height spaces on the northeast end of the building.





**North Elevation** View from Dillingham St.



**East Elevation** View from Bay Ave.



**West Elevation** View from the Chattahoochee River.

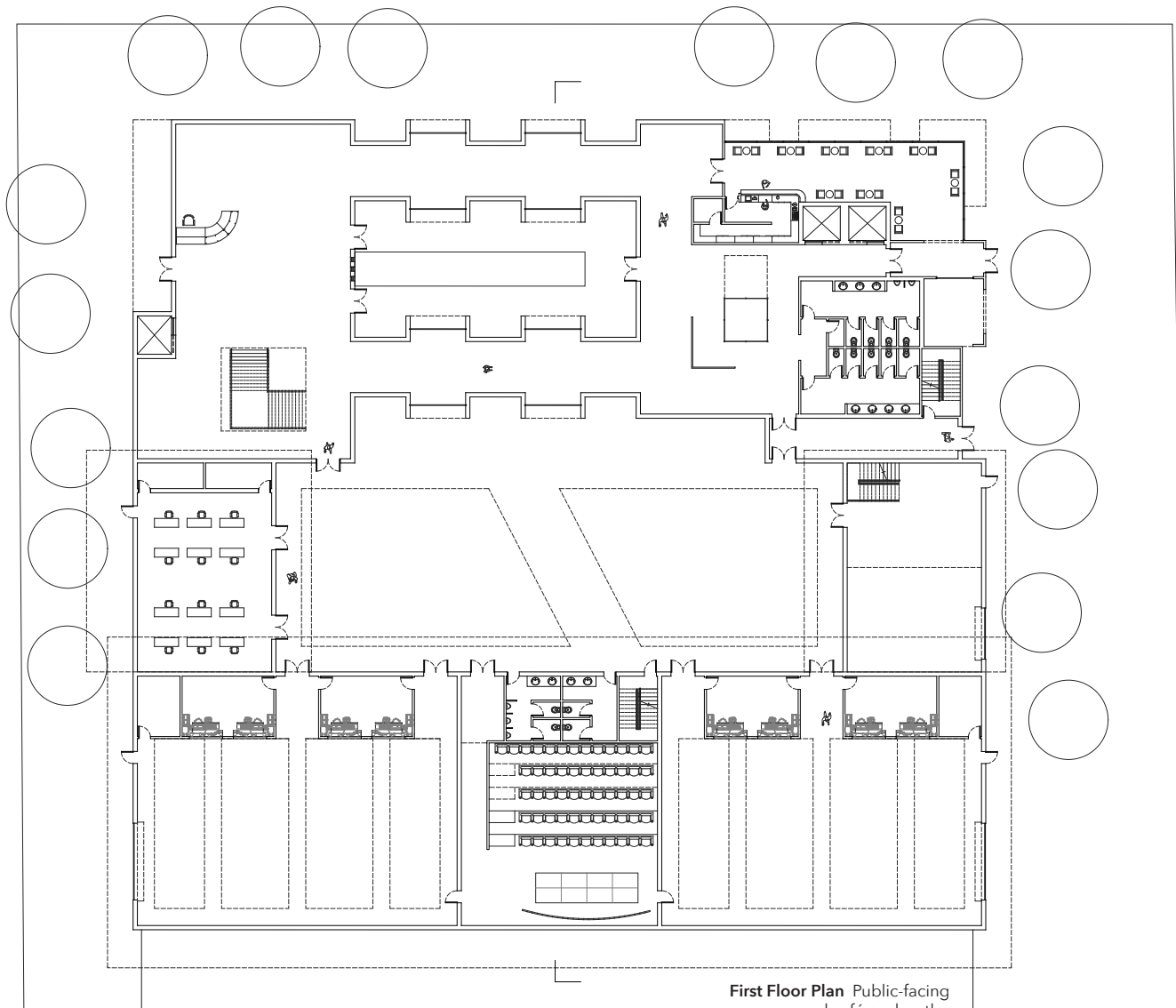
**Left: Riverwalk View** Pedestrian view from the riverwalk looking up at the west facade.

The Film Strip blends production, exhibition, and public gathering into a unified media center anchored by a bold, geometric facade inspired by the boxy form of early film cameras. The building brings together two filming studios, a scene shop, editing suites, offices, and a small movie theater, creating a complete workflow from production to screening. Facing the street, a display museum showcases props, artifacts, and materials from in-house films, allowing the public to engage directly with the world of film making.

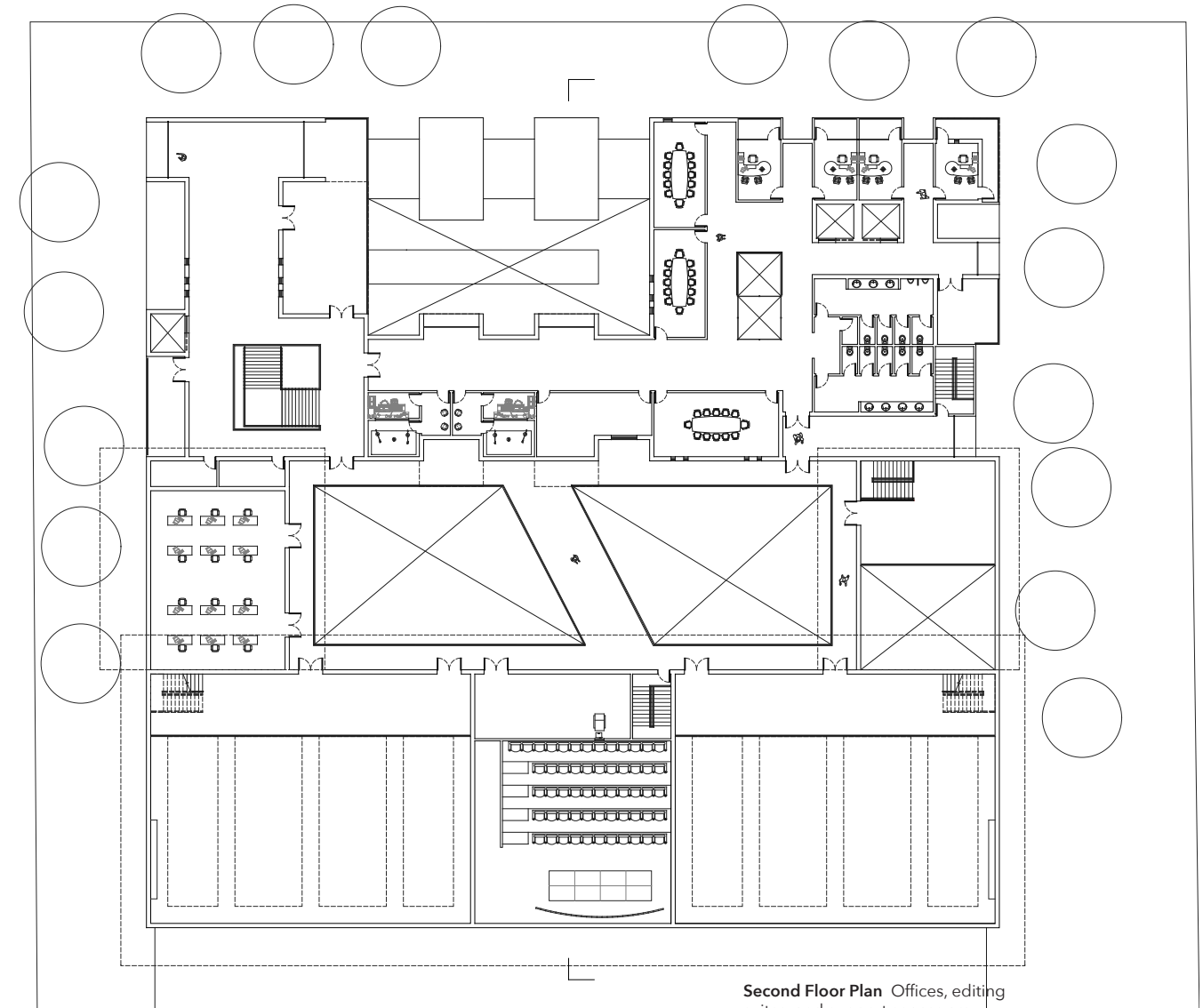
The architectural expression emphasizes crisp white massing and sculpted voids that read as cinematic frames, guiding visitors into a series of luminous interior spaces. Transparent ground-floor storefronts open the museum and café to the street, while more controlled volumes hold the technical spaces required for filming and post-production. Inside, circulation is organized for efficiency, allowing studio, editing, and support areas to function cohesively while maintaining separation from public viewing zones.



**Main Entrance View** Staggered geometric forms frame the museum entrance.

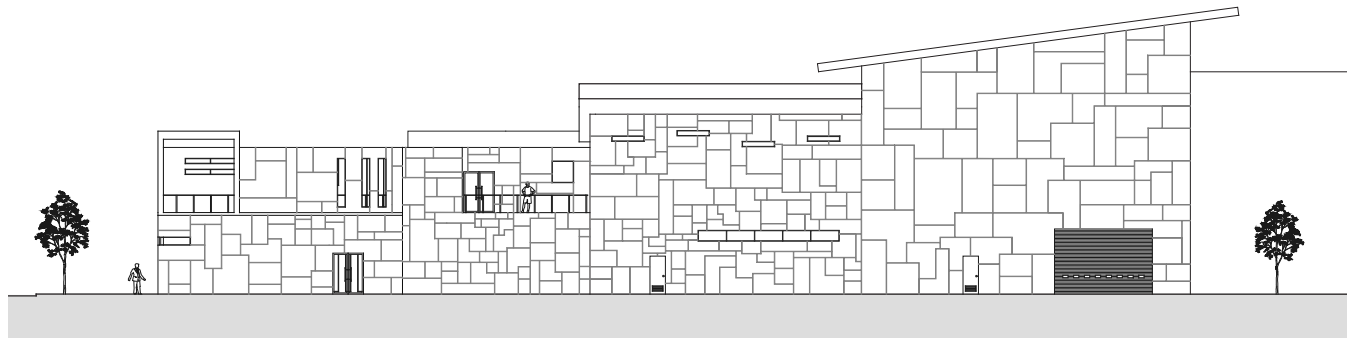


**First Floor Plan** Public-facing museum and café anchor the ground level, with production spaces arranged in the back of the building.

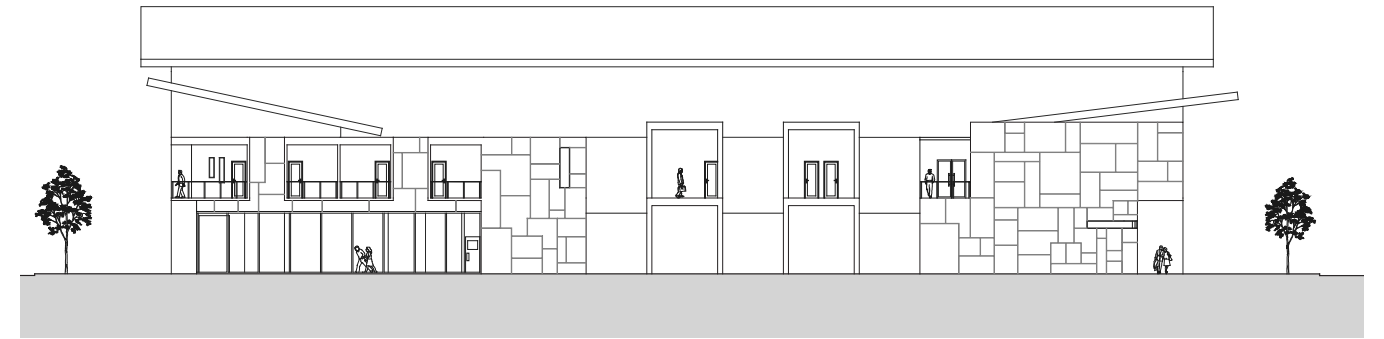


**Second Floor Plan** Offices, editing suites, and support spaces are organized for efficient production flow above the public museum level.

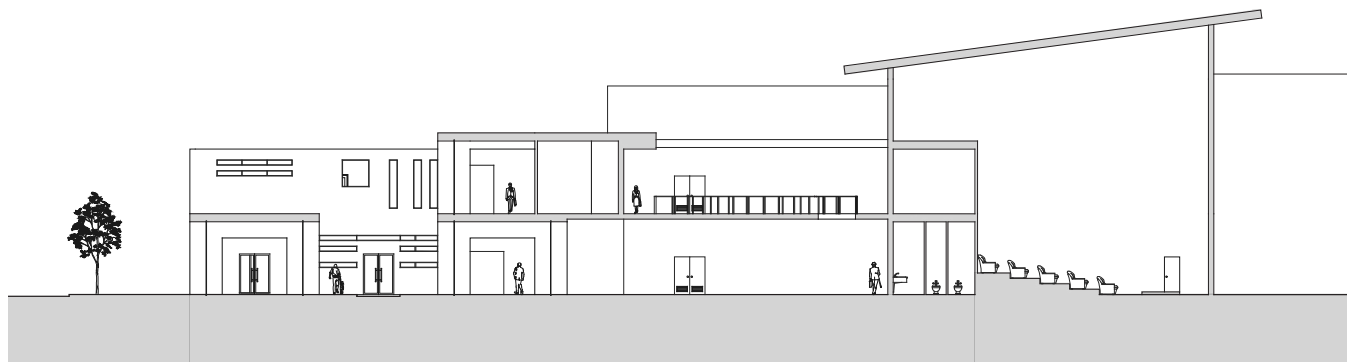




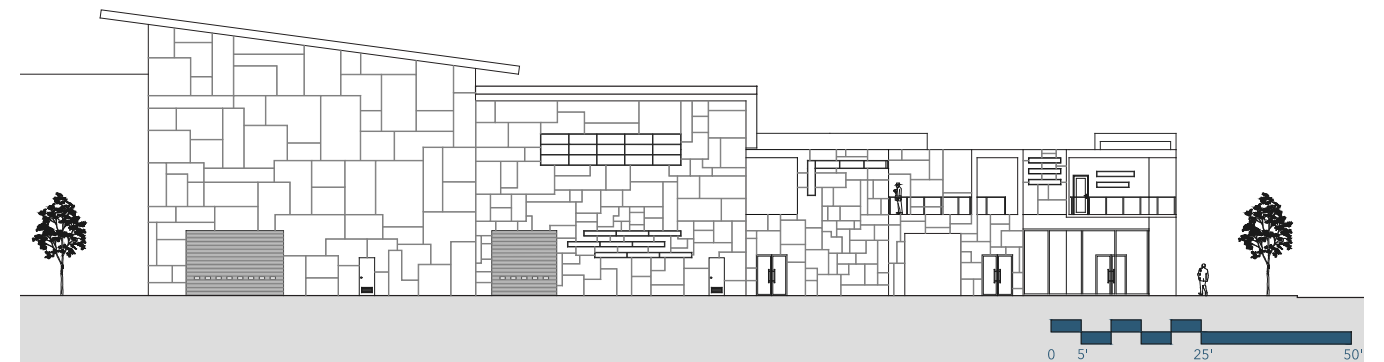
**East Elevation** View from Broad St.



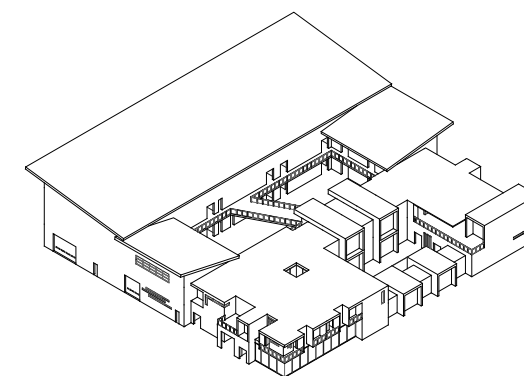
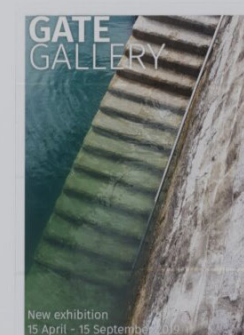
**North Elevation** View from E Aquarium Way.



**N/S Section** Reveals how public facing elements are separated from private production.



**West Elevation** View from Cherry St.



**SW Axon** Aerial view of the project.

**Left: Gallery View** Light filled gallery that guides visitors through the museum's exhibition spaces.

**Following Page: Exterior Corner View** Boxy massing inspired by classic film cameras frames the museum and cafe at the street edge.

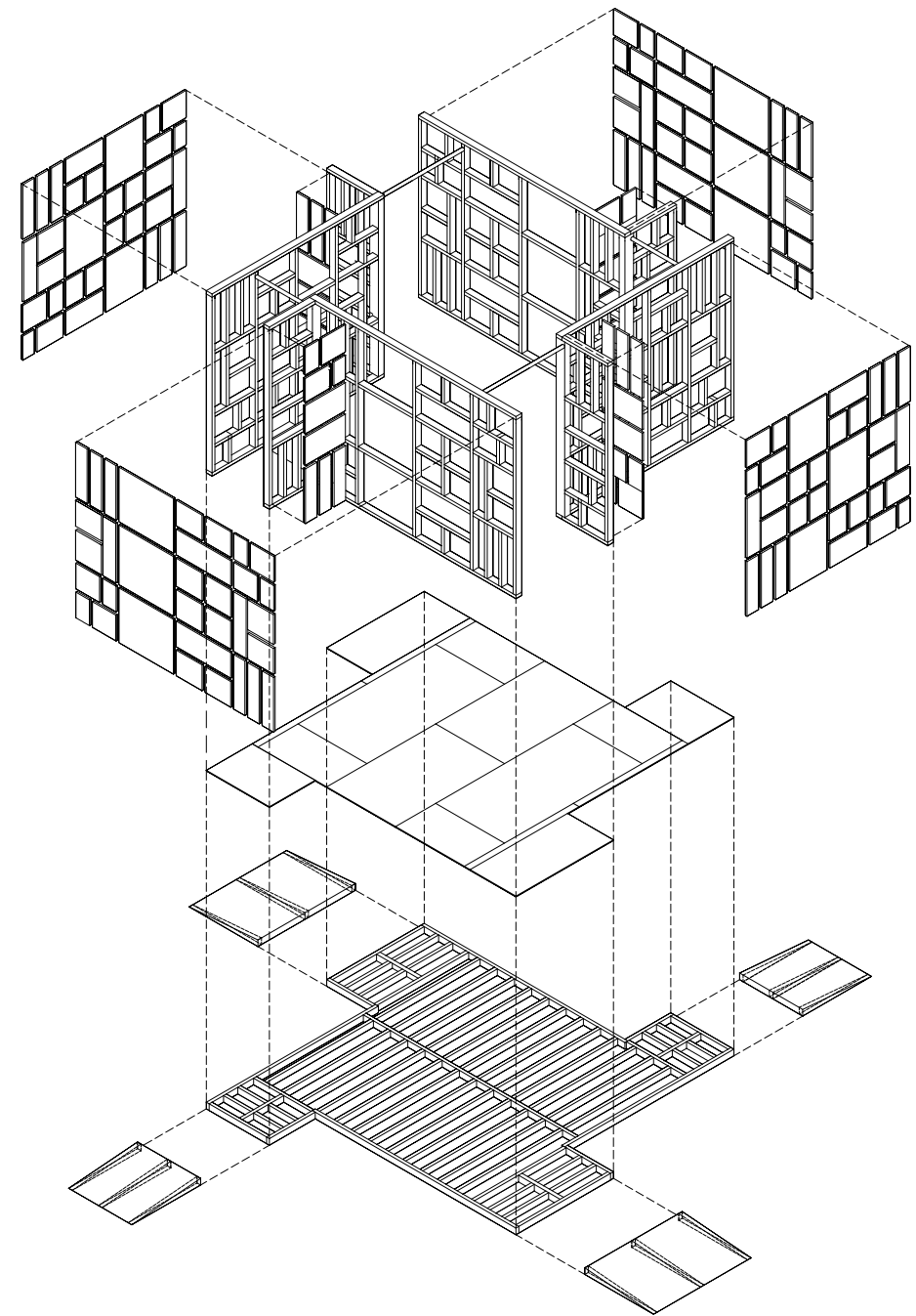


# WINTER WONDER PRISM

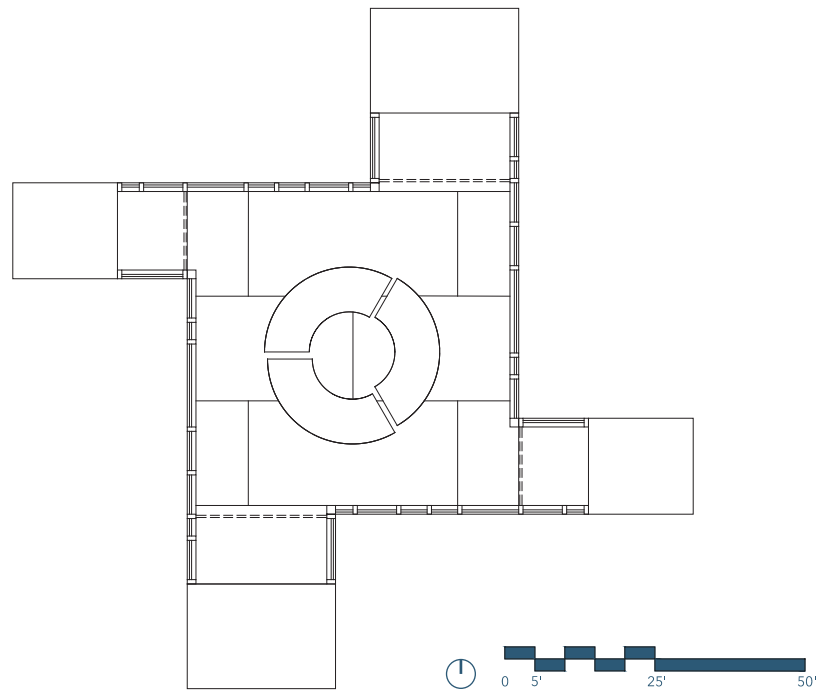
Winter Prism Wonder was designed for the Warming Huts: Art + Architecture Competition on Ice, located along the historic Nestaweya River Trail in Winnipeg. Inspired by the site's history as a gathering place for multiple Indigenous tribes, the project embodies the idea of coming together from all directions to a shared point of warmth and reflection.

The design employs stained plexiglass panels arranged in a geometric rhythm reminiscent of Mondrian's compositions and traditional stained glass. Each of the four entrances invites visitors inward, their converging paths meeting at a central space of color, light, and rest. The interplay of transparent and opaque surfaces offers both glimpses outward and moments of privacy within, transforming as sunlight shifts across the ice.

Lightweight wood framing supports the translucent walls, while soft sheer curtains define entry thresholds and provide structural stability. Elevated slightly above the snow, the hut creates a glowing beacon on the frozen landscape creating a vivid contrast to its white surroundings. Winter Prism Wonder provides the space with vibrancy, warmth, and communal spirit, inviting skaters and pedestrians alike to pause, gather, and share the color of the season.

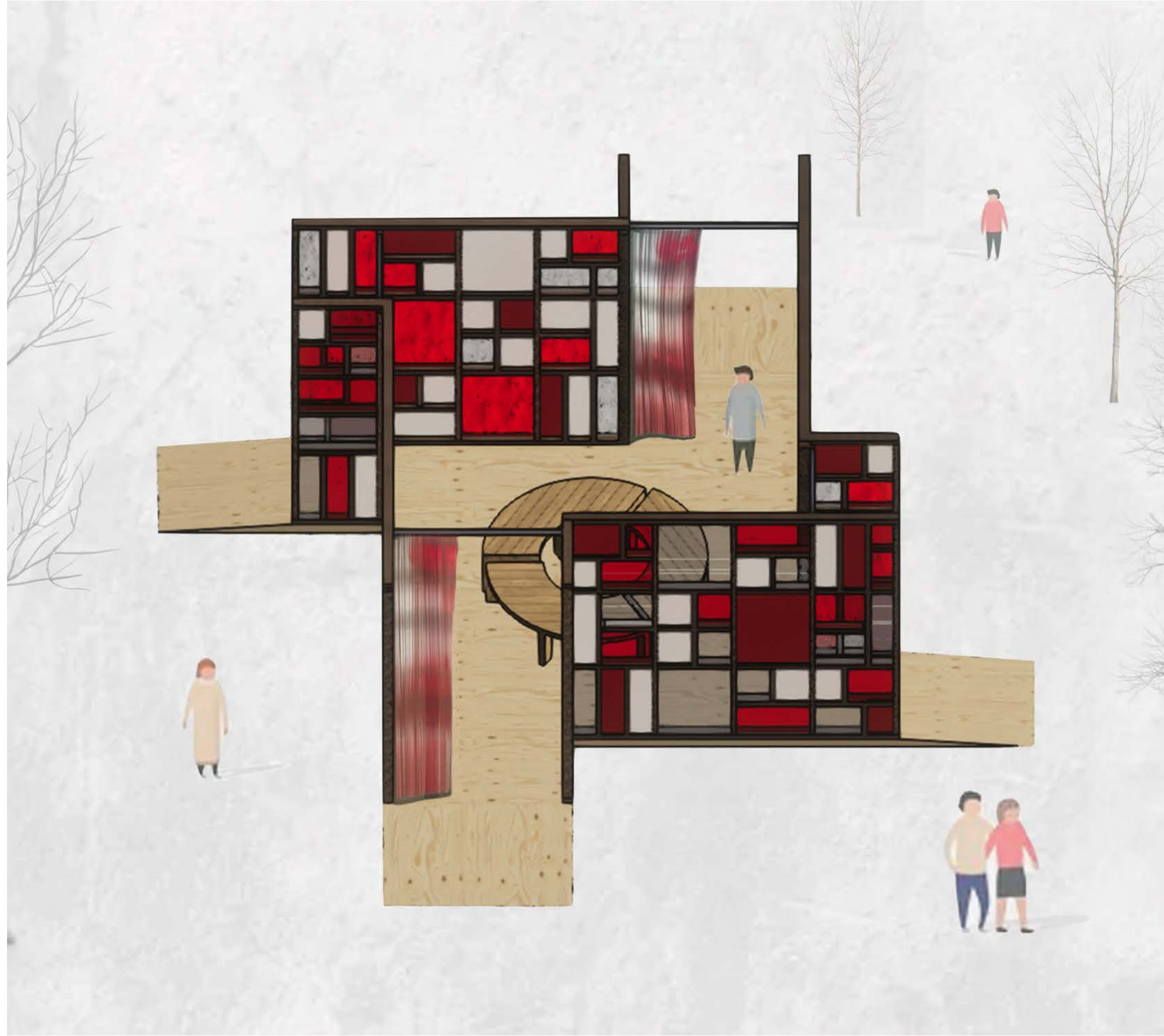


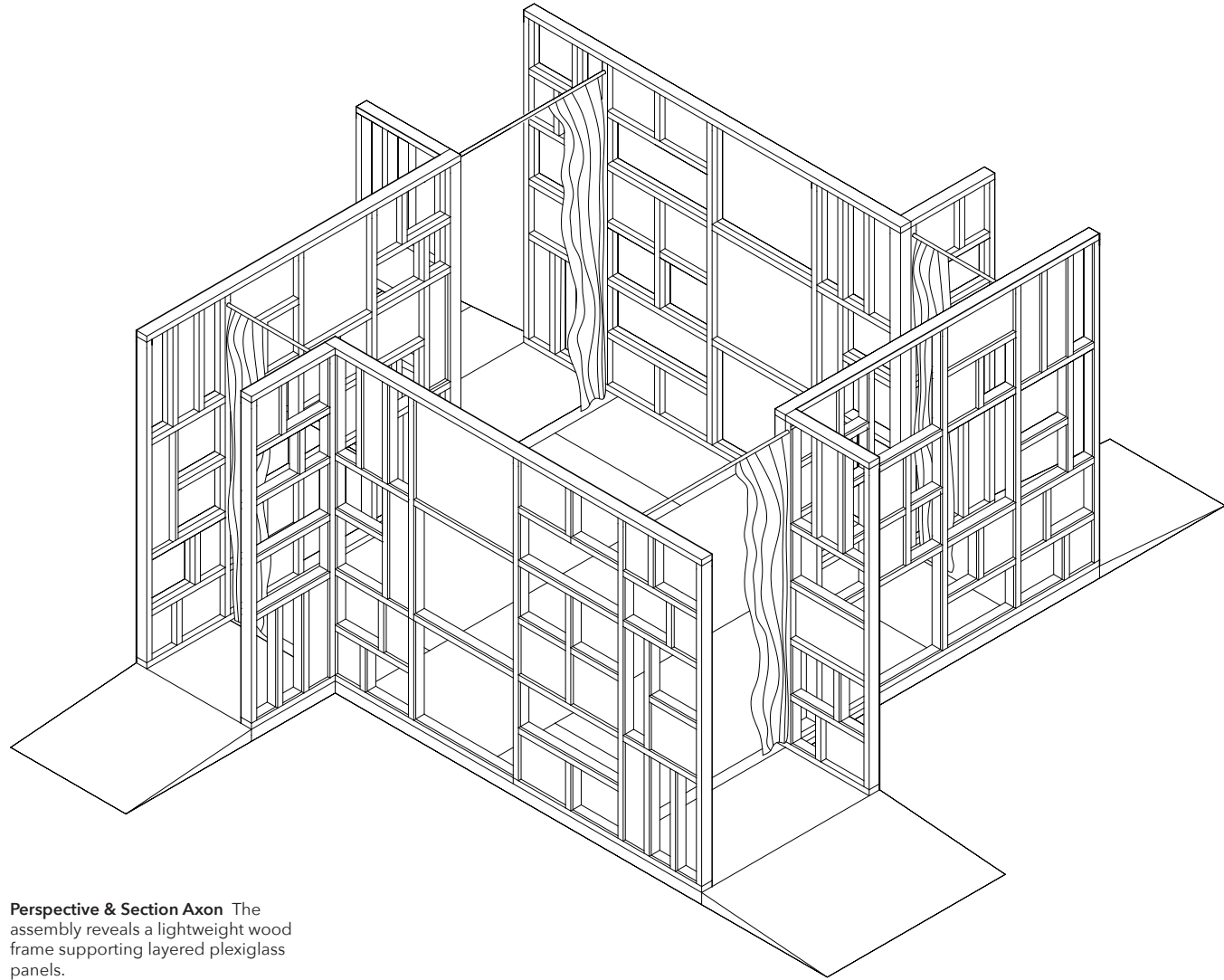
**Exploded Axon** The assembly reveals a lightweight wood frame supporting layered plexiglass panels.



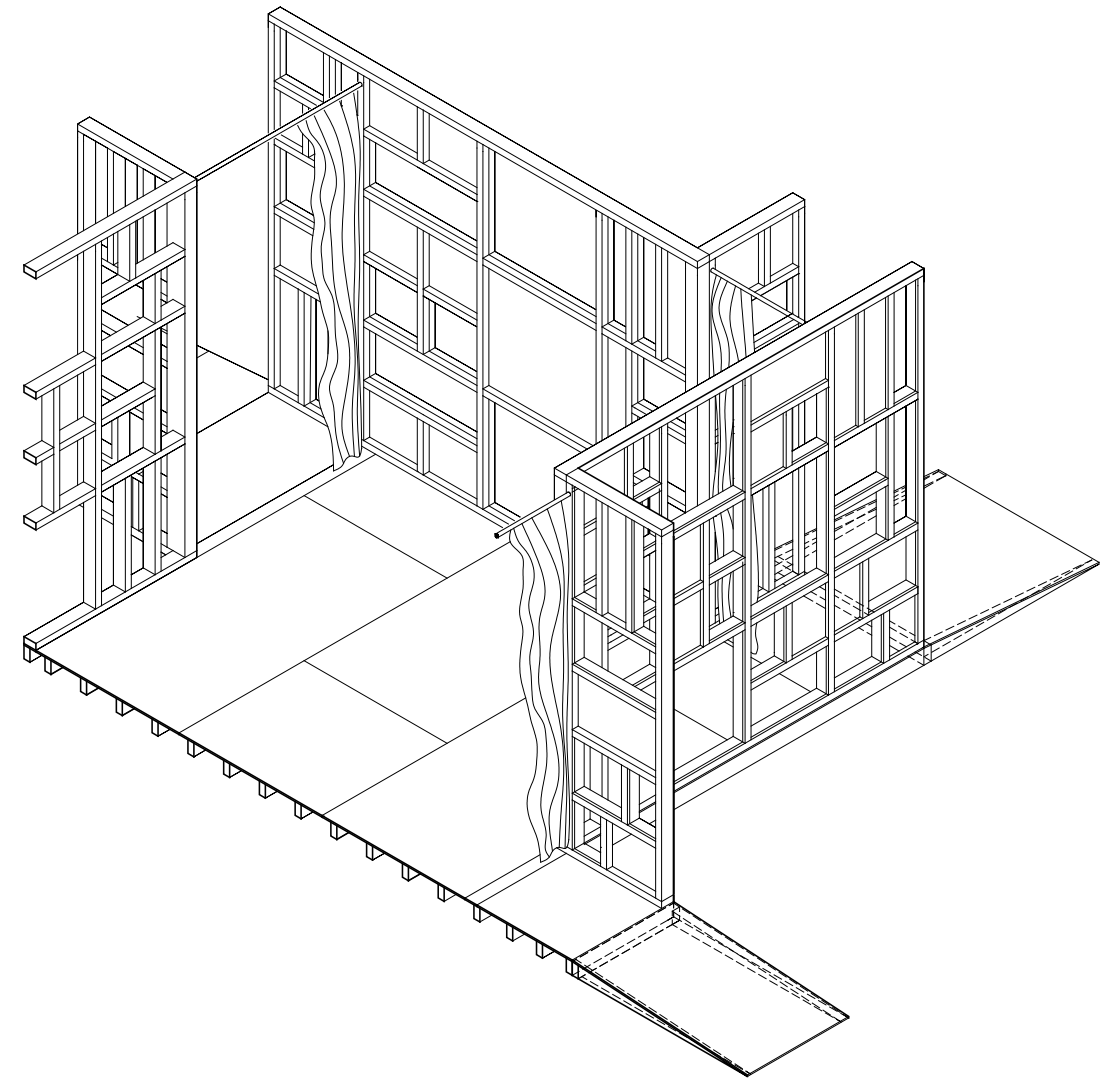
**Above: Project Plan** Four entrances converge toward a central gathering space.

**Right: Aerial Render** Reveals how the public interacts with the project.





**Perspective & Section Axon** The assembly reveals a lightweight wood frame supporting layered plexiglass panels.

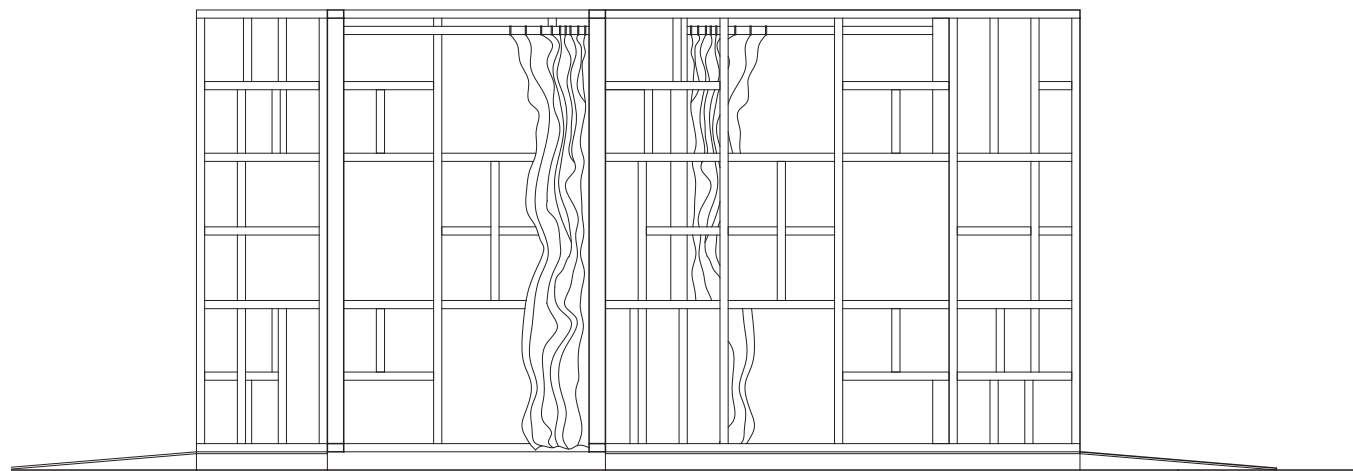




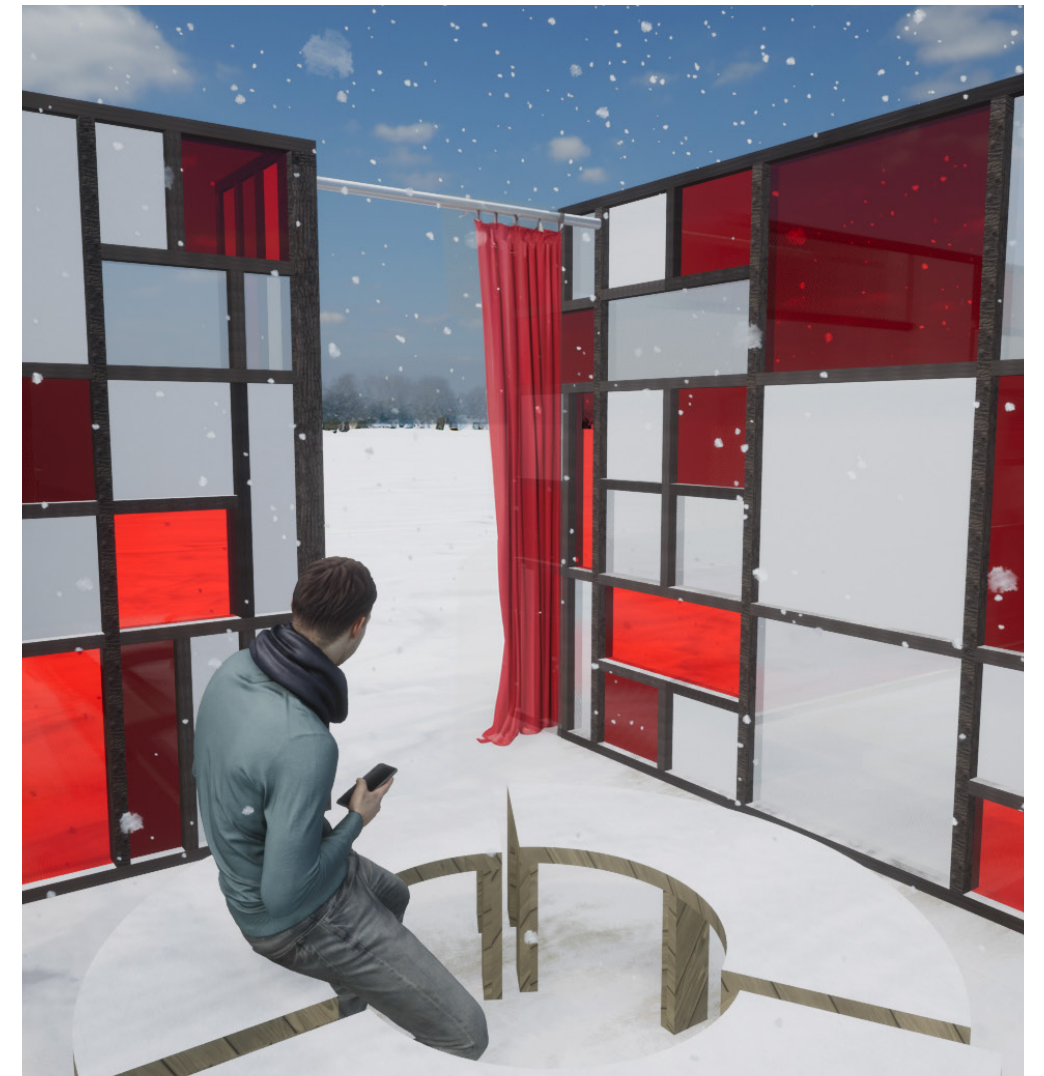
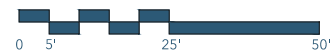
**Left: Perspective Render** Reveals how the public interacts with the project.

**Below: Model Photo** Cardboard construction showcasing the lightweight nature of the project.



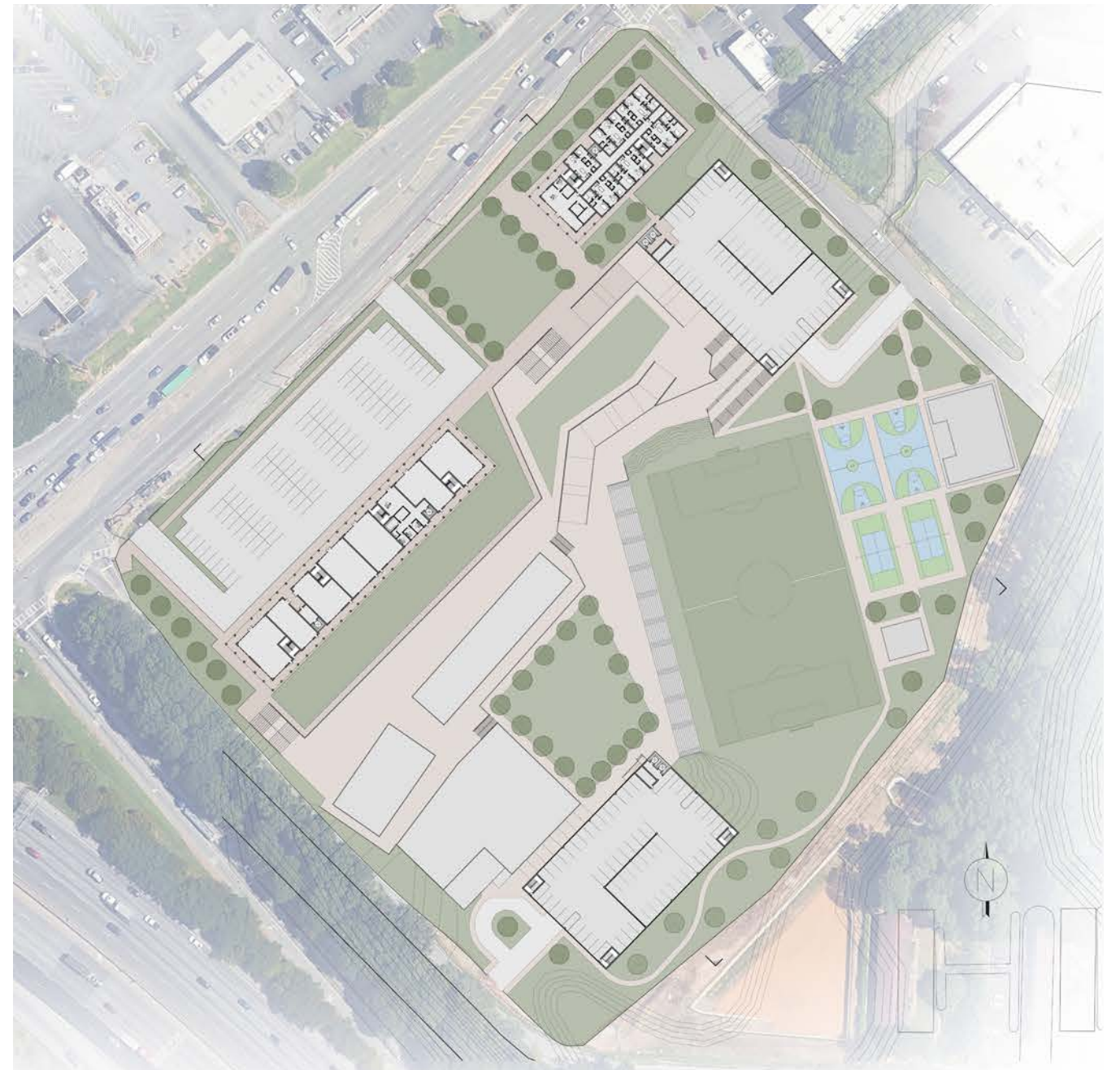


**North Elevation** Reveals how the public views the project while approaching.

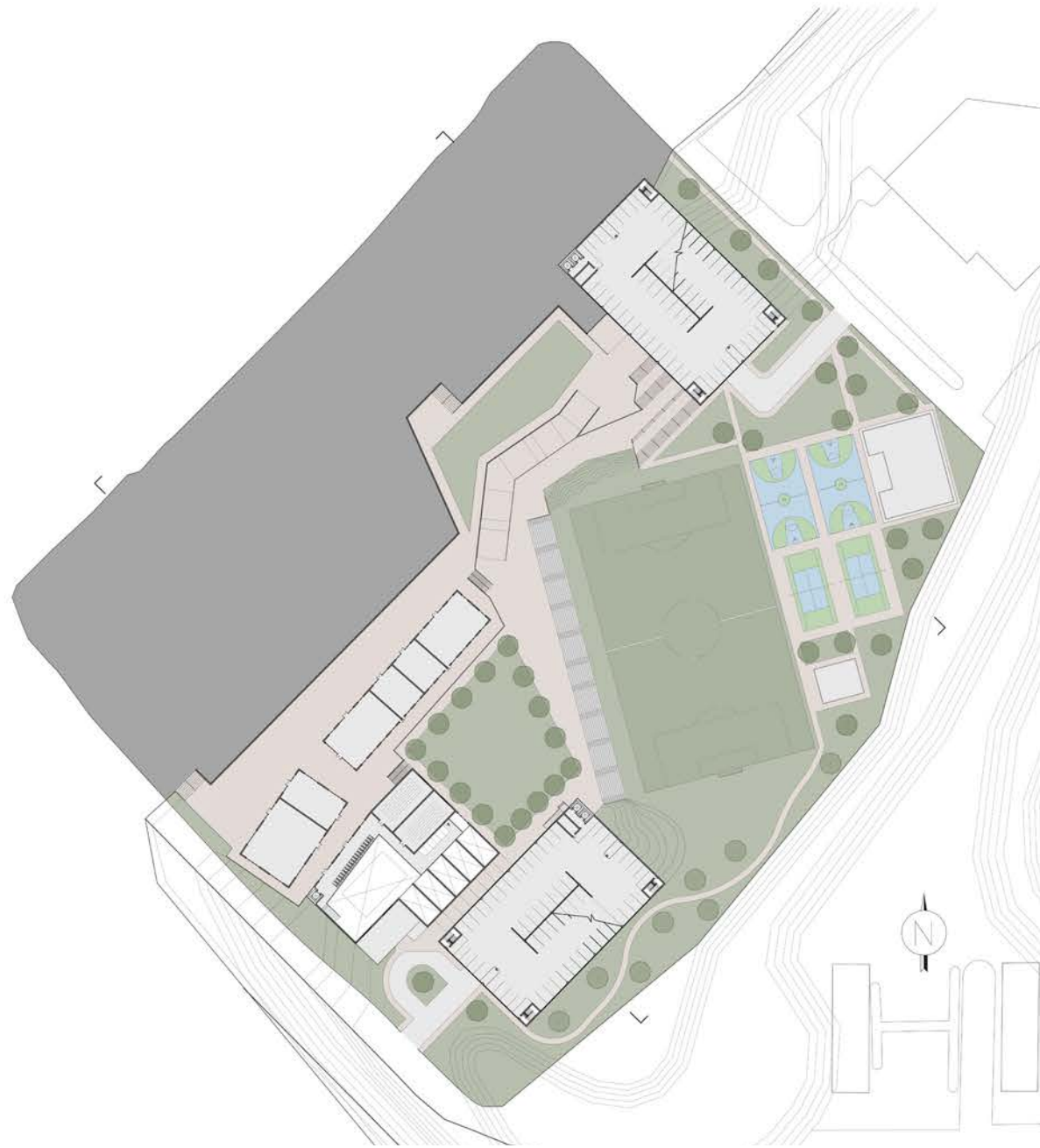


**Interior View** Reveals how the public interacts with the project.

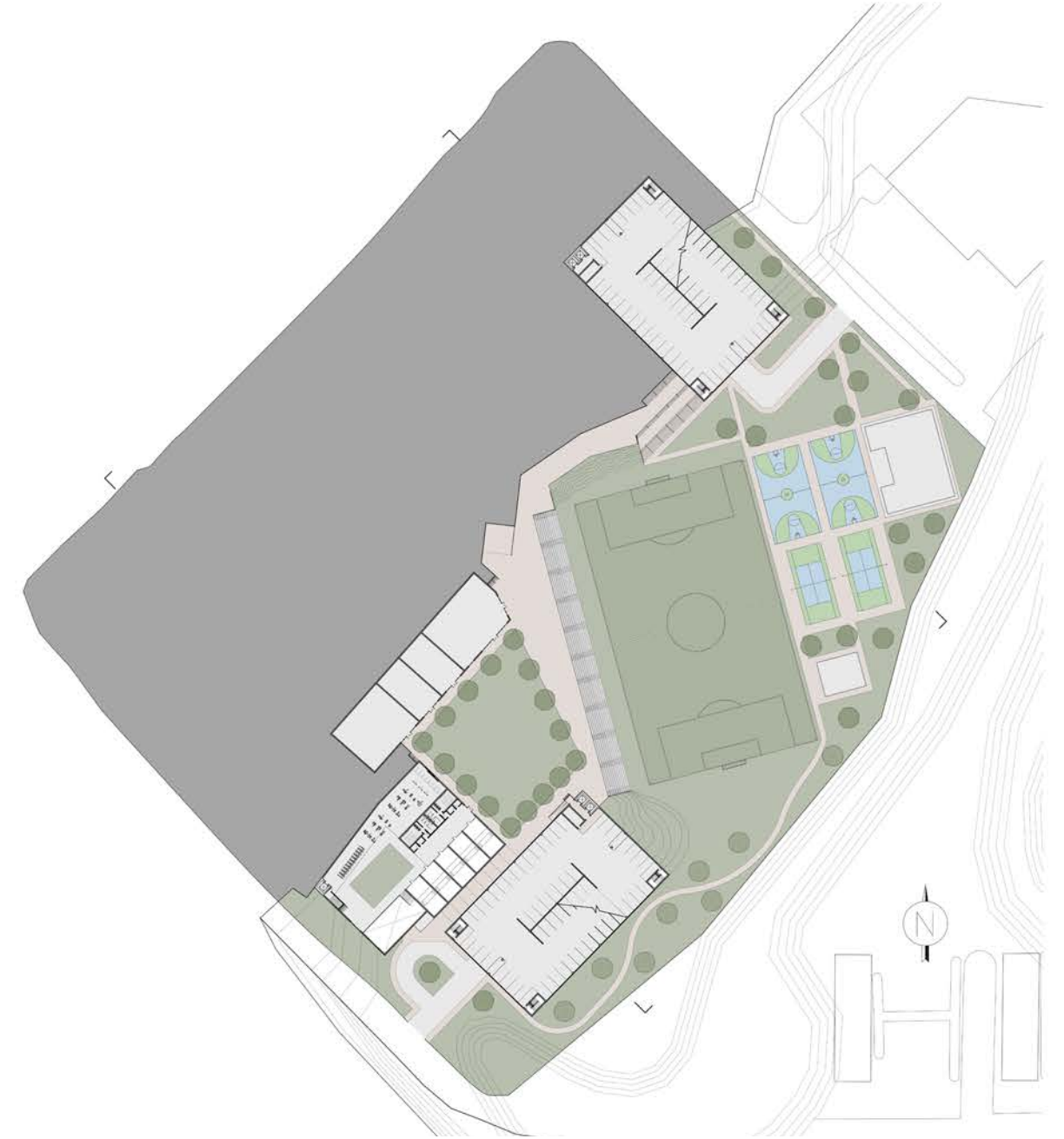
This project investigates the relationship between ground, movement, and occupation through the design of a sports-anchored mixed-use district in Doraville, Georgia. Positioned along Buford Highway, the proposal reimagines a car-dominated site as a pedestrian-oriented environment where housing, retail, and recreation operate as a unified system. Using topography as a primary organizational tool, the design layers program into the landscape through sectional strategies, embedding athletic spaces within the ground while maintaining active edges and accessible public space above. Rather than separating uses across the site, the project integrates them vertically, creating a continuous field of activity where sports act as a daily driver of movement, shaping both the architecture and the public realm.



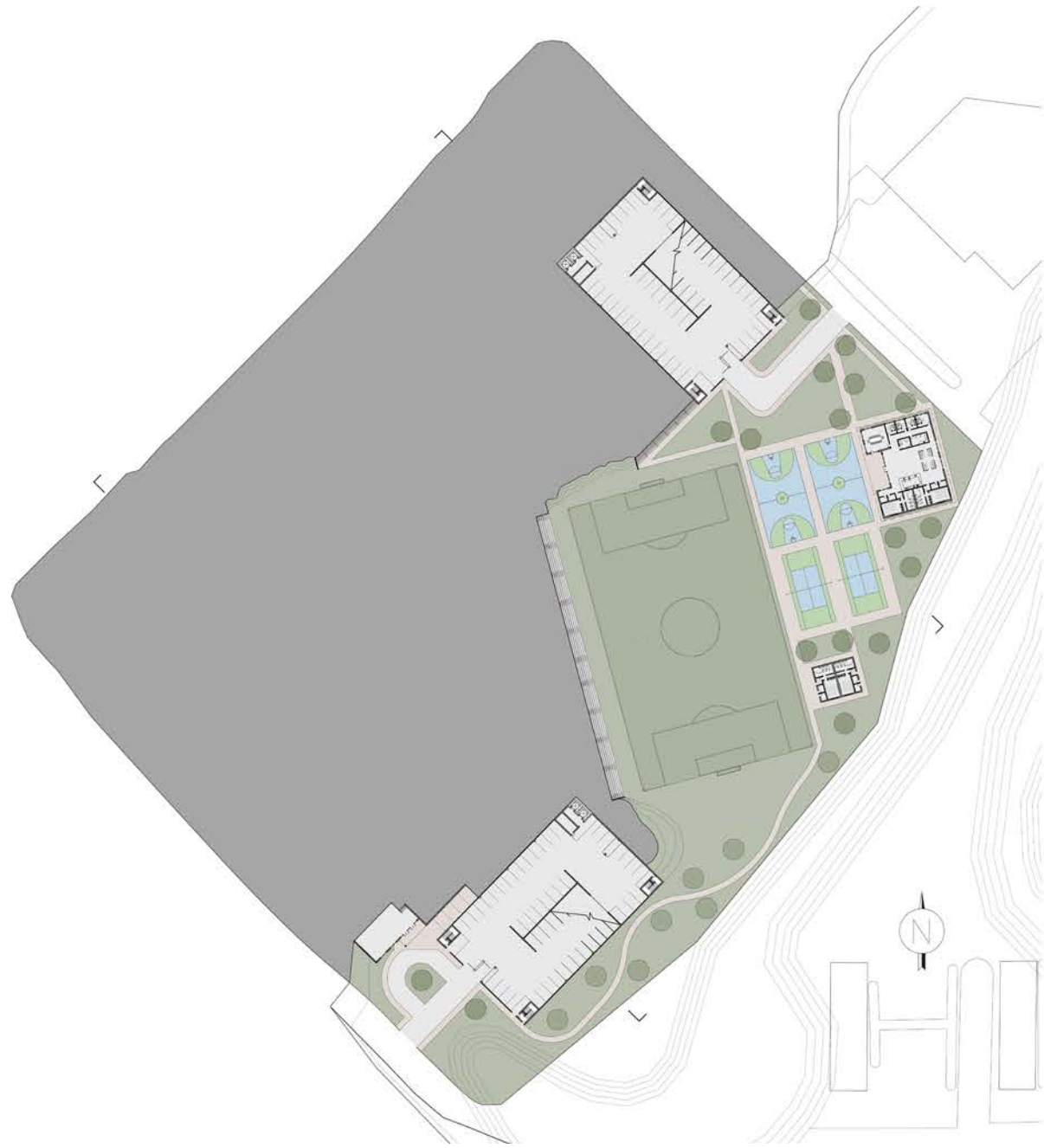
**0' – Street Level**  
Street-level plan showing primary access to residential units and upper-level retail, establishing the main pedestrian entry and connection to Buford Highway.



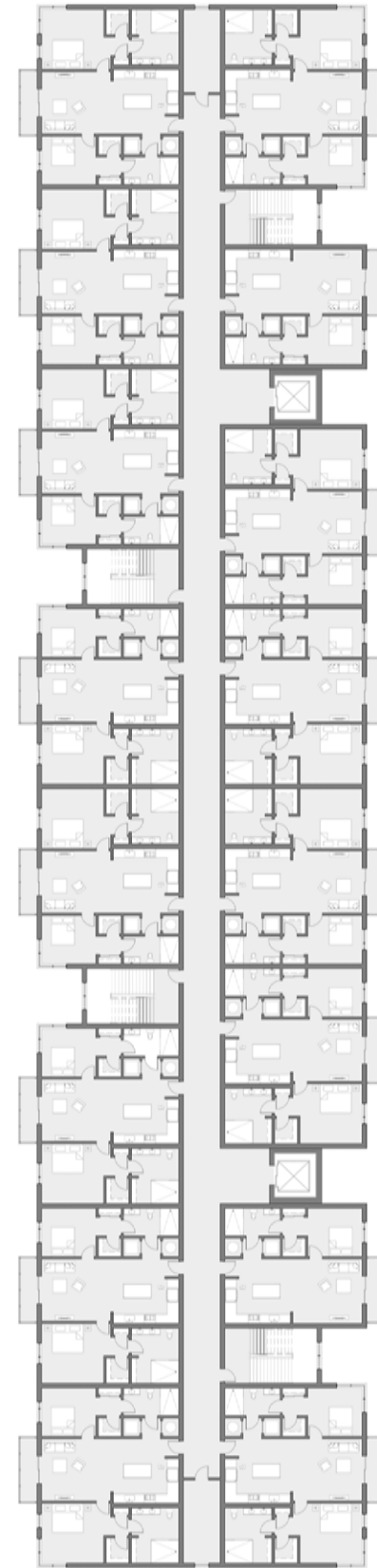
**-10' – Intermediate Retail Level**  
 Intermediate level where retail continues along the slope, maintaining visual and physical connections between upper residential areas and lower athletic spaces.



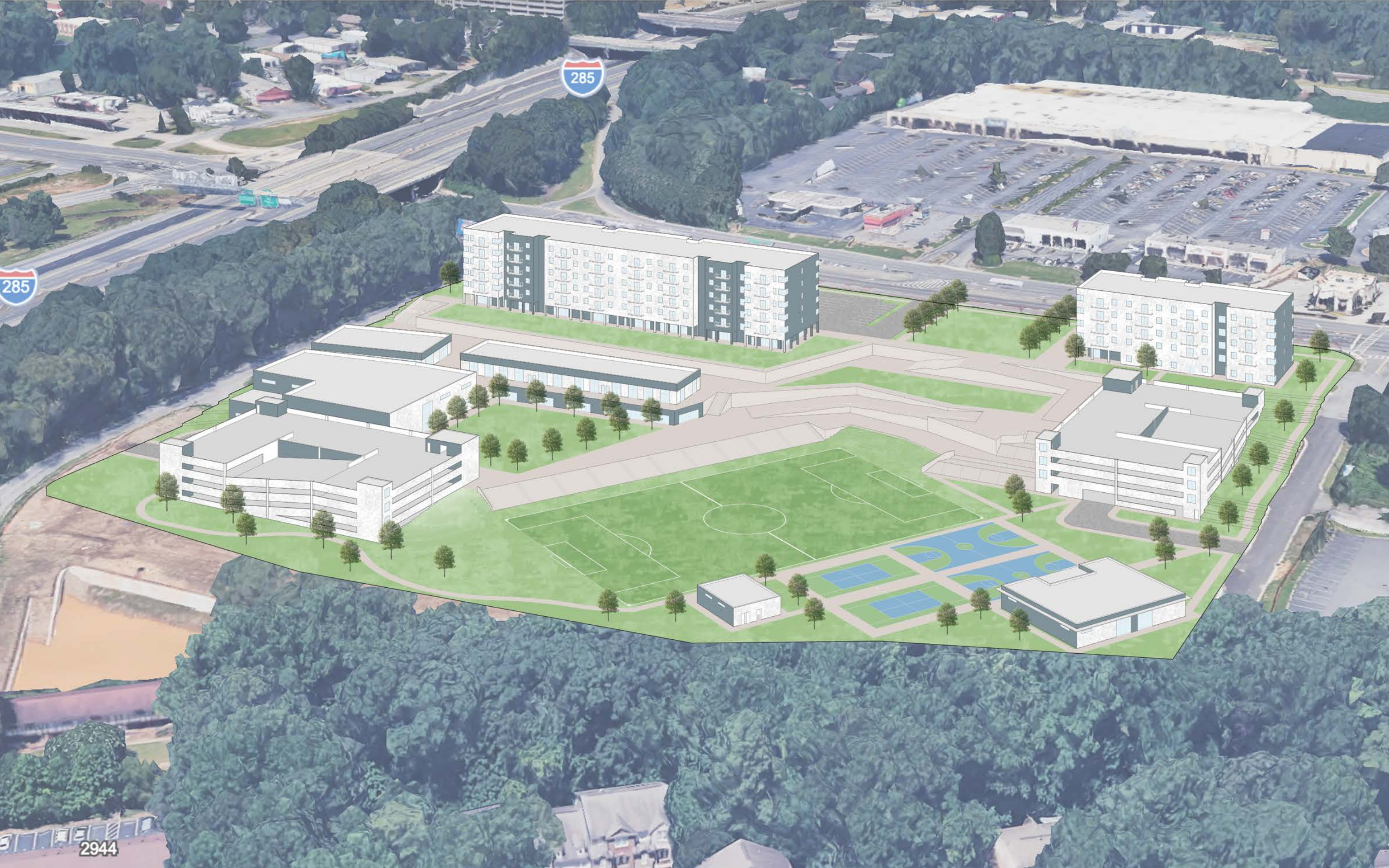
**-22' – Gym + Retail Level**  
 Lower-level plan integrating indoor recreation and gym facilities into the site's topography, creating a transitional zone between commercial activity and athletic program.



**-30' – Field + Parking Level**  
 Ground-level plan at the base of the site, where outdoor athletic fields and parking are organized as the central active space of the development.

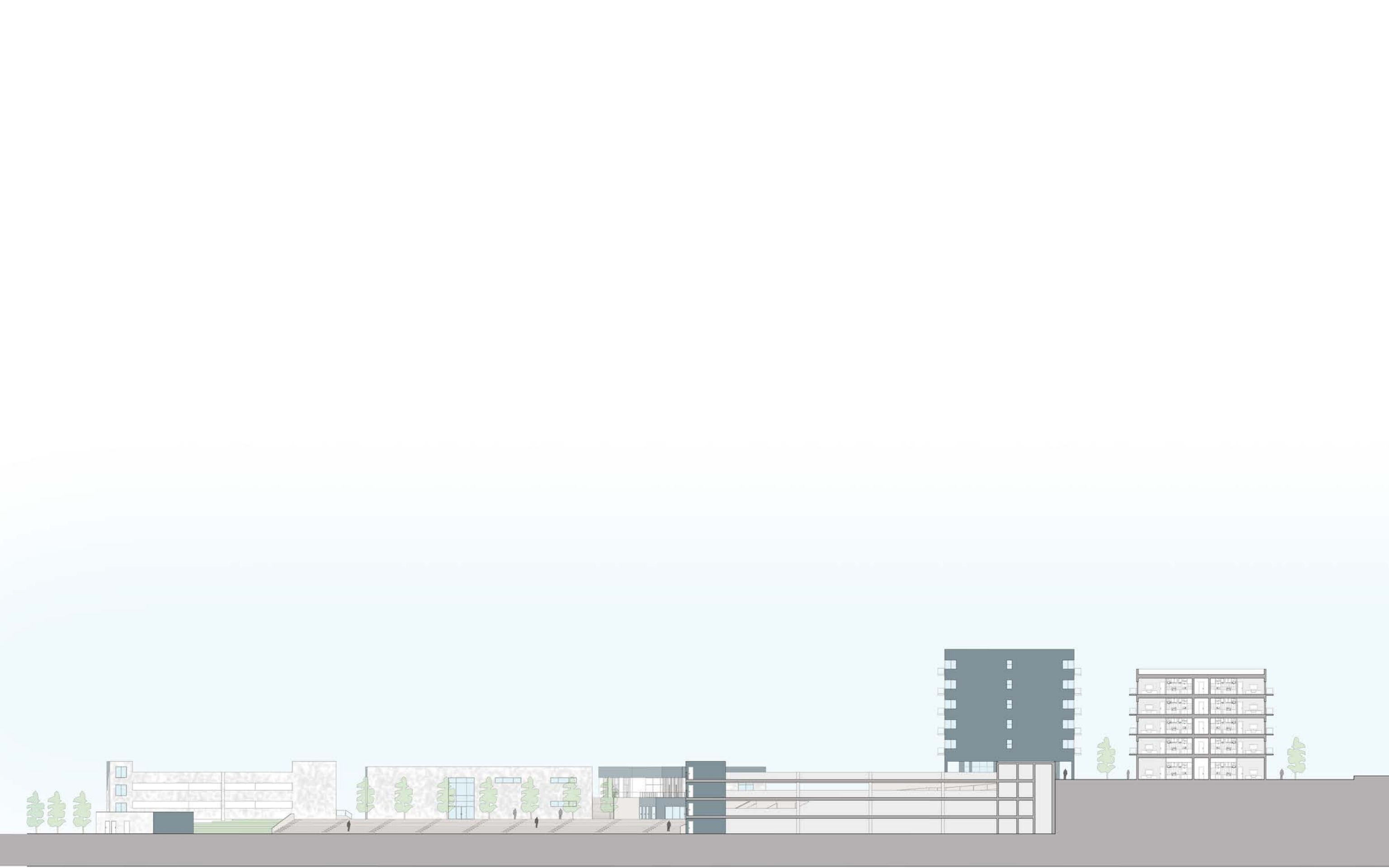


Apartment plans are organized to support density within the overall mixed-use system, with units positioned above retail and directly connected to the pedestrian spine that links the site's recreational and public spaces.













## PROJECT STATS

- **Residential**
  - 118 Units
  - 134,520 SF Total
  - ~1,140 SF Avg Unit Size
  - ~275 Residents
- **Retail**
  - 17 Shops
  - 40,557 SF Total
  - ~2,385 SF Avg Shop Size
- **Recreation / Fitness**
  - 26,015 SF Gym Facility
  - 5 Racquetball Courts (indoor)

## SPORT + ACTIVITY

- 1 Soccer Field
- 2 Basketball Courts
- 2 Pickleball Courts
- **Estimated Simultaneous Users:**
  - Soccer: ~22 players + spectators
  - Basketball: ~20 users
  - Pickleball: ~8 users
  - Gym + Racquetball: ~60-80 users

## SITE + DENSITY

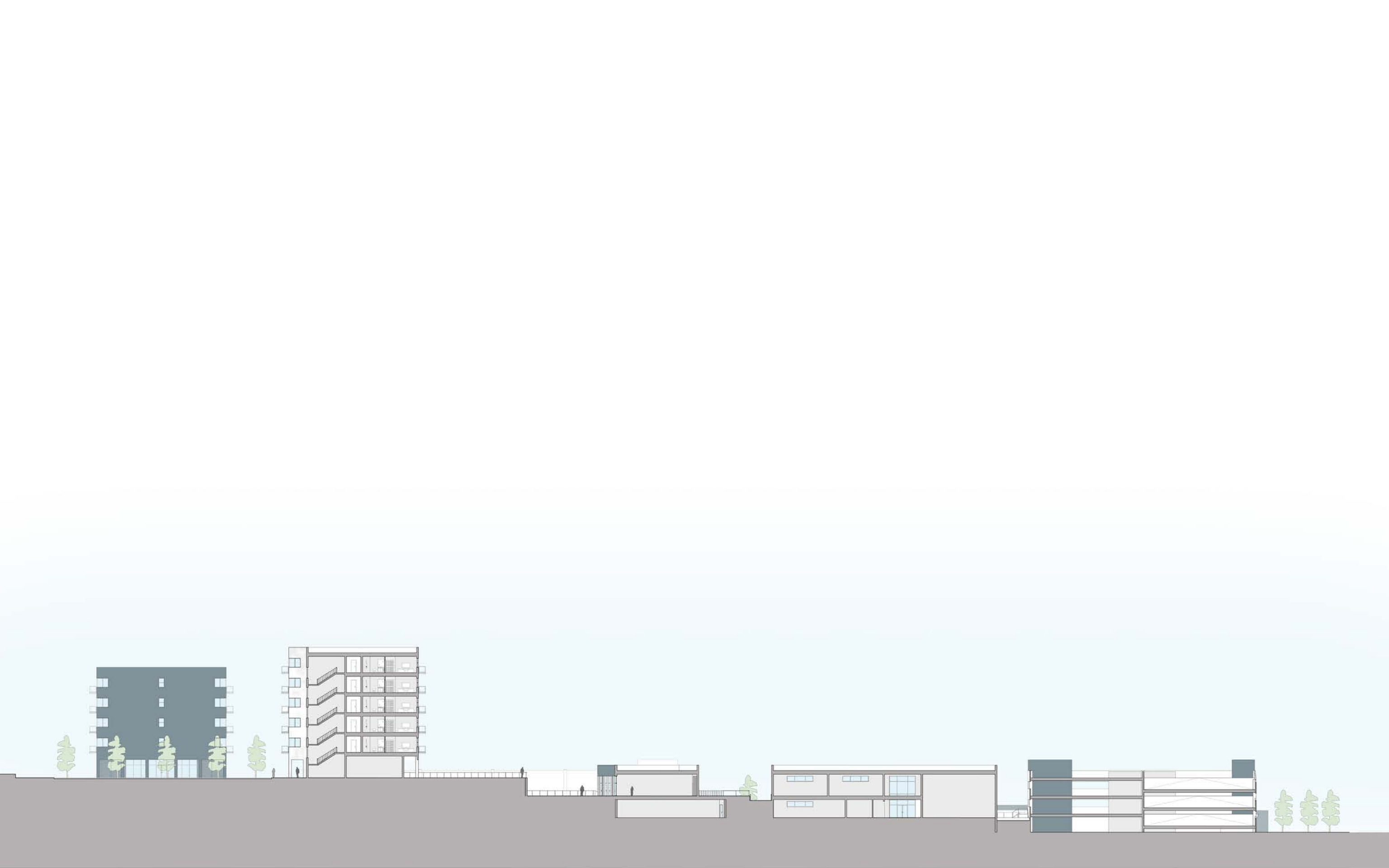
- Site Area: ~13 Acres
- Residential Density: ~9 units/acre

## PARKING

- 546 Total Spaces
- Street Level Parking Lot + Structured Parking (2 garages)

## SECTION + ACCESS

- 30 ft elevation change across site
- Dual access condition:
  - Upper level: retail + residential
  - Lower level: athletic fields + courts
- Integrated stairs + accessible ramp system



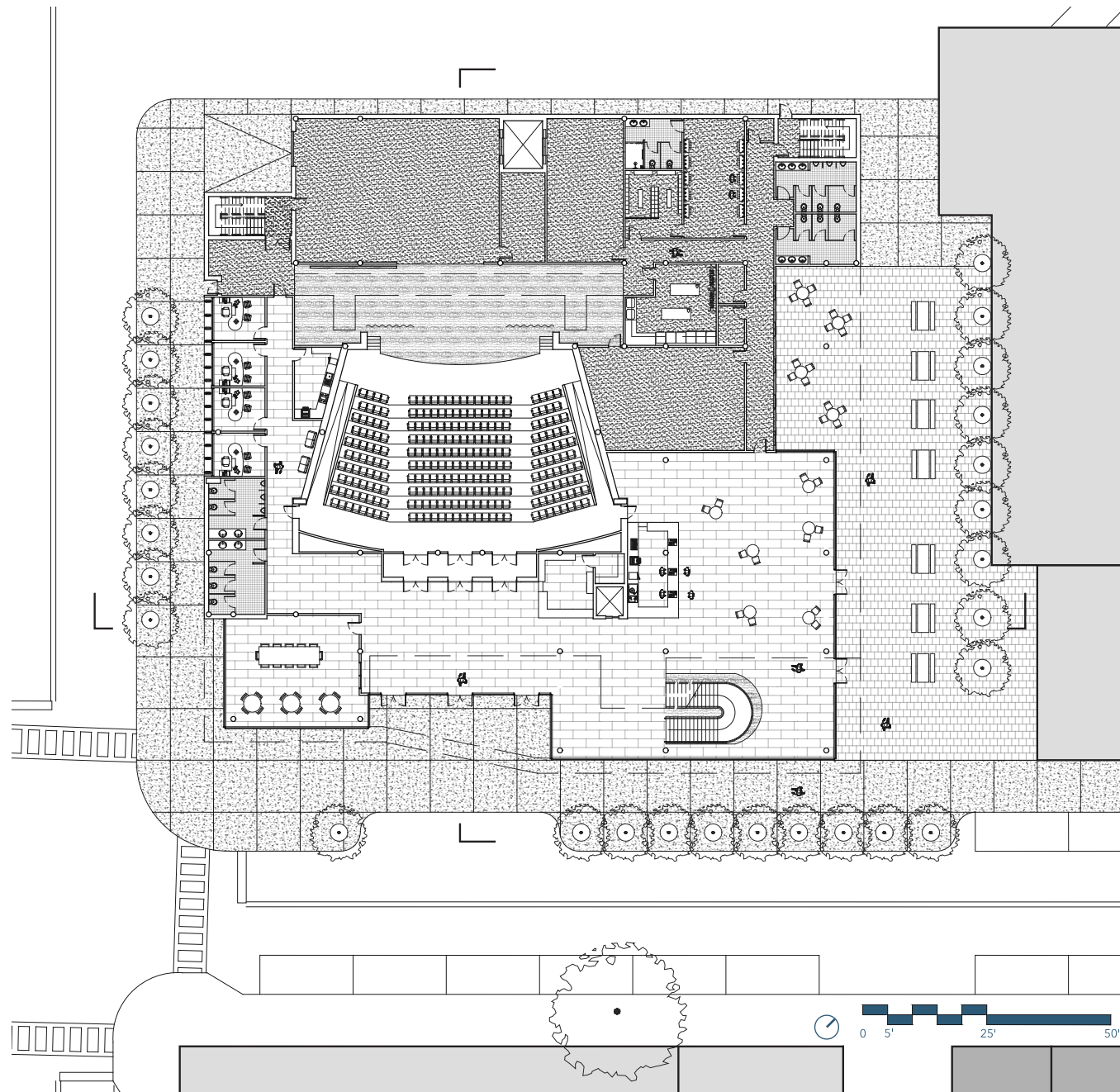
Located in downtown Huntsville, Alabama, this project introduces a new performing arts center designed to unite performance, education, and community. The program includes a full-scale theater, two dance studios, and a suite of production spaces—including a scene shop, AV control rooms, and dressing areas—supporting a diverse range of performances and creative work. A spacious community room and café with indoor and outdoor seating extend the building's use beyond performance hours, inviting daily public interaction.

Once defined by a vacant alleyway, the site has been re-imagined as a vibrant urban connector. The former void now serves as a lively social corridor linking the café and interior lobby to the surrounding streetscape, activating the downtown fabric through movement and light.

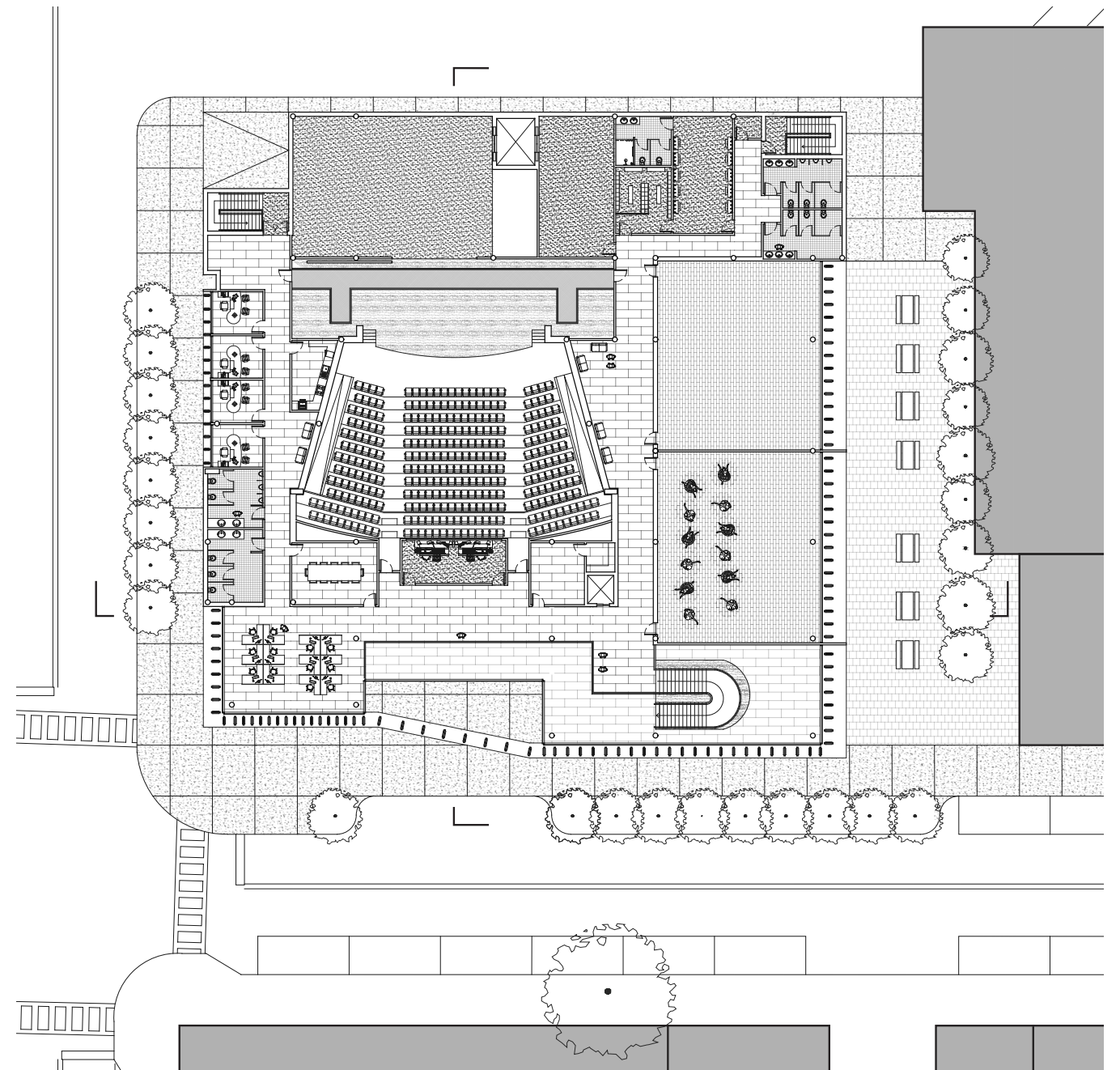
The architectural expression is guided by a dialogue between openness and control. A transparent glass facade reveals the building's internal activity, while a system of concrete louvers modulates sunlight and defines the center's visual rhythm. Constructed of steel and concrete, the building achieves both durability and acoustic integrity.



**Alley View** Vertical louvers frame the glass facade, revealing the lobby interior.



**Ground Floor Plan** Opens the building to the city, connecting the lobby, cafe, and theater through a transparent facade. A transformed alleyway is used as a space for lively public gatherings.



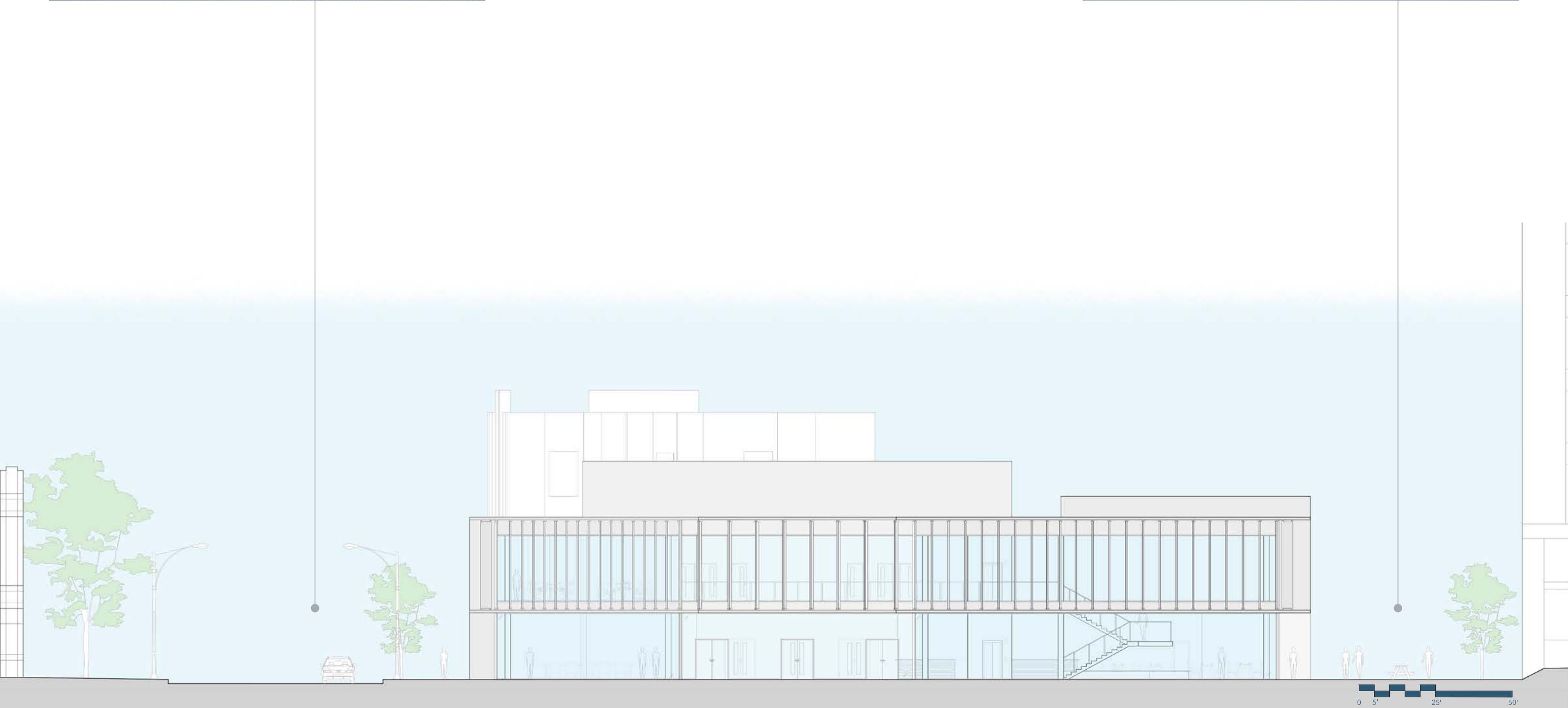
**Second Floor Plan** Houses two dance studios, rehearsal spaces, and offices arranged around a central spine. The concrete fins are used to provide privacy and shading to the more private floor.

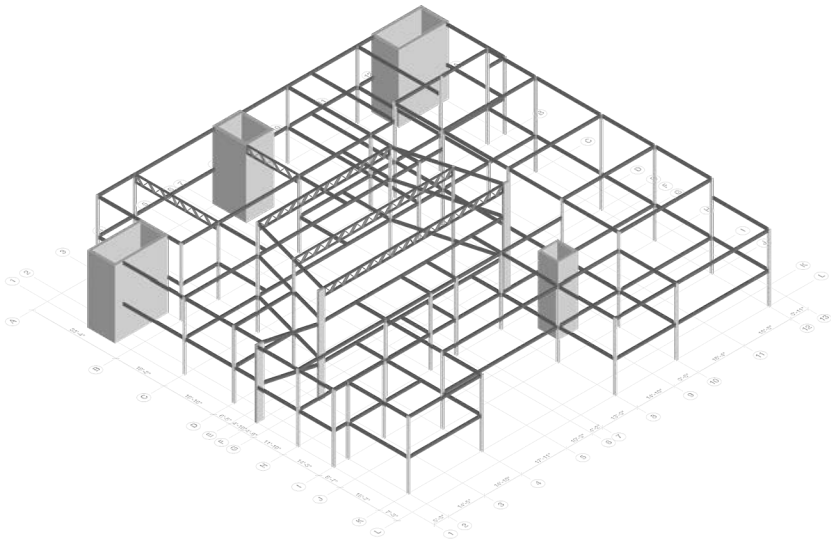


**Left: Corner View** Rhythmic concrete louvers shade glass facade while revealing the main entrance.

**Right: Street View** A transparent ground floor opens the lobby and cafe to the street, extending activity into the re-imagined alleyway.

**Below: South View** The elevation presents a balance of transparency and rhythm, with vertical concrete louvers shading the glass while revealing glimpses of the lobby and theater beyond.



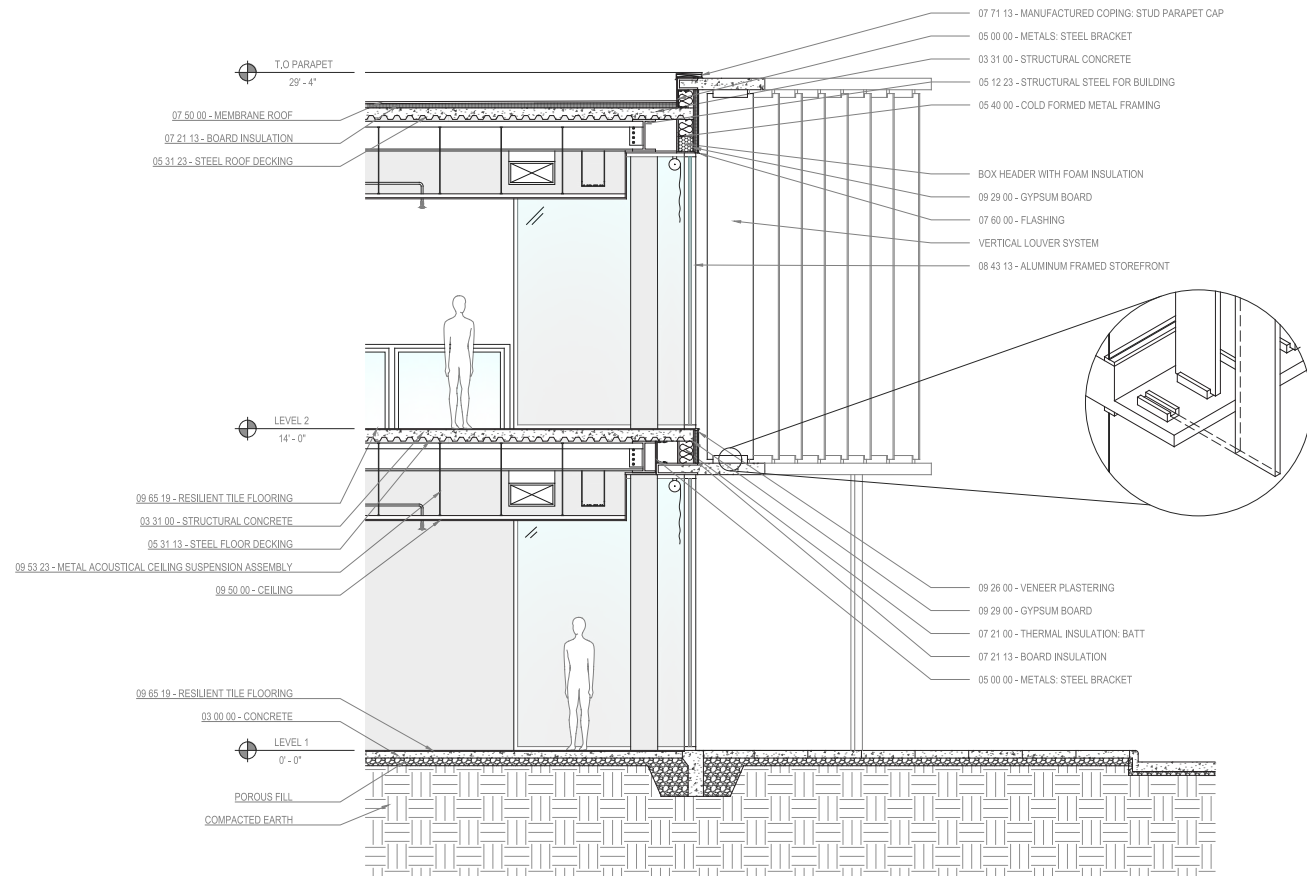


**Left: Structural Plan** The structure is composed of steel columns and beams wrapped in concrete with supporting concrete cores for circulation.

**Below: Wall Section** Detailed section that shows specific materials used in the design of the building.

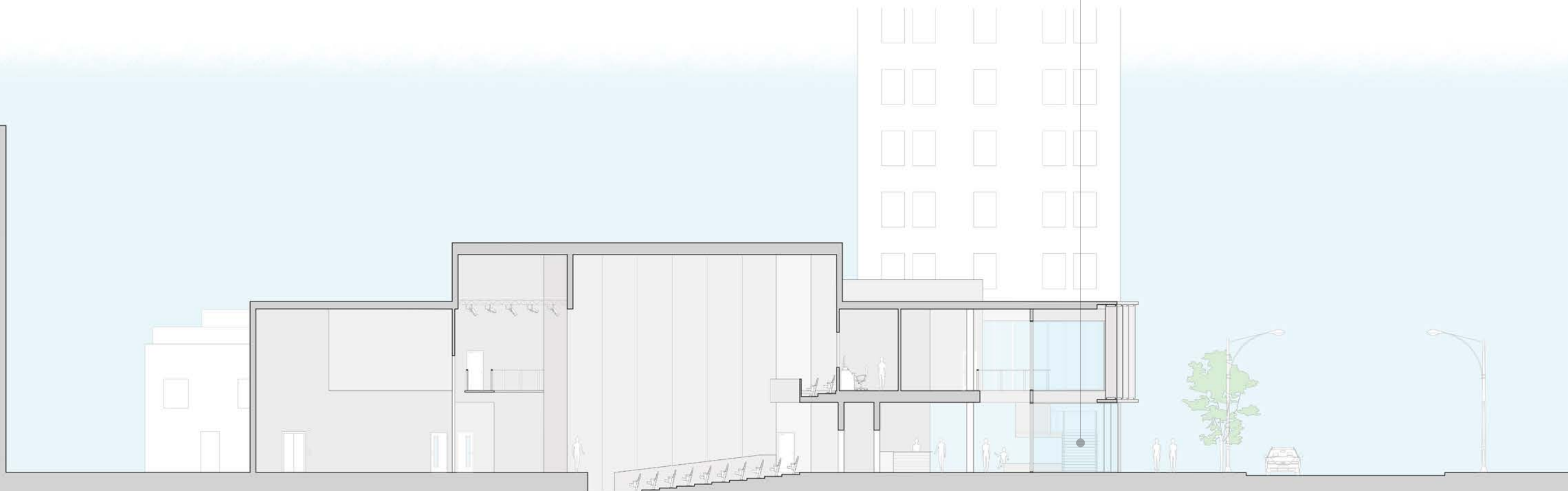
**Right: Wall Section** Detailed section render that shows structure, mechanical, and material of the main entrance facade.

**Following Page: N/S Section** Reveals main entrance and theater access.





**Cafe Entrance View** A sculptural central stair anchors the lobby and links the public entry to the upper performance spaces.



# CHRONOLOGY

01



Project  
Location  
2022

02



After School Adventures  
Auburn | AL  
2022

03



The Lofted Grid  
Chicago | IL  
2022

04



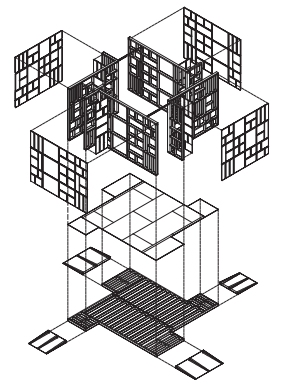
Path of Life  
Auburn | AL  
2023

05



Welcome 180  
Montgomery | AL  
2023

06



Winter Prism Wonder  
Quebec | CA  
2023

07



The Floating Garden  
Opelika | AL  
2023

08



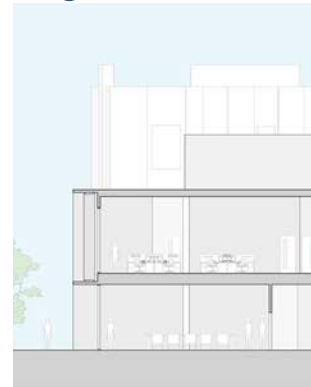
The Film Strip  
Chattanooga | TN  
2024

09



The Magnet  
Nashville | TN  
2024

10



Curtains of Concrete  
Huntsville | AL  
2025

11



Framework  
Columbus | GA  
2025

12



STRATA  
Doraville | GA  
2026

## PROFESSIONAL SUMMARY

Emerging architectural designer with multi-year internship experience supporting residential community projects through plan development, 3D modeling, and digital rendering. Proficient in AutoCAD, Rhino, SketchUp, Lumion, and Adobe Create Suite, with track record of enhancing visualization quality, applying curated material palettes, and refining architectural drawings to meet design standards and project goals.

Recognized for strong communication, attention to detail, and fast software leaning abilities, reinforced by Autodesk certifications in AutoCAD, Revit, and Inventor. Brings a professional work ethic, a collaborative mindset, and a passion for translating design concepts into clear and compelling architecture.

## EXPERTISE

- Revit, certified user by AutoDesk, 2020
- Inventor, certified user by AutoDesk, 2019
- AutoCAD, certified user by AutoDesk, 2018
- Proficient in Rhino, SketchUp, Lumion, Twinmotion, Photoshop, InDesign, Word, Powerpoint, Excel, Adobe

## PROFESSIONAL EXPERIENCE

**Architecture Intern**, 05-07/2023, 05-07/2024, 05-07/2025  
GL Homes, Sunrise, FL

- Reviewed and further developed 75 floor plans throughout multiple communities to ensure design accuracy and compliance with project standards.
- Designed and developed custom assets for 3D model rendering to enhance visualization quality.
- Applied 200 curated color schemes to 3D house models and rendered them in Lumion to effectively present design options.

**Website Creator and Manager**, 10/2020-02/2021

Lynn Realty Group, Boca Raton, FL

- Created reports, presentations and other materials for executive staff.
- Designed and maintained company realty website and social media.

**Architectural Student Shadow**, 06/2020

Smith Architectural Group, Palm Beach, FL

- Took extensive notes while documenting construction and design methods, further solidifying learning objectives.
- Toured luxurious waterfront mansions in South Florida to study design techniques with an architect.

## EDUCATION

**Bachelor of Architecture**, 05/26

Auburn University | Auburn, AL  
NAAB accredited professional program

**Pre-Architecture**, 05/21

Auburn University | Auburn, AL

- Summer Intensive: competitive first year entrance program.

**Pre-Architecture**, 05/19

Georgia Institute of Technology | Atlanta, GA

- Pre-College Architecture Program

**Game Design**, 5/17

Emory University | Atlanta, GA

- Designed interactive environments and levels for video games.

**Game Design**, 5/13 & 5/14

Princeton University | Princeton, NJ

- App games design for iPhone and iPod
- 3D game design in Minecraft

## ACHIEVEMENTS

- Deans List: Fall 2023, Spring 2024, Spring 2025, Fall 2025
- 3.5 GPA
- Familiarity with construction document workflows and residential production sets.
- Experience supporting project teams through plan development and design revisions.
- Comfortable translating design intent into 3D models and visualizations.

**Avenir Next**

Designed by Adrian Frutiger, 1988  
Redesigned by Akira Kobayashi, 2004  
8"x10" trim size printed by Blurb.